

# DRAFT FINAL REPORT VOLUME 2: APPENDICES

## YALE MAINTENANCE FACILITY ASSESSMENT

City Of Albuquerque  
ABQ Ride  
Albuquerque, New Mexico



**PARSONS  
BRINCKERHOFF**

June 2015



# TABLE OF CONTENTS

---

## **VOLUME I**

### **Executive Summary**

Acknowledgments .....	I
Background.....	II
Facility Condition Assessment.....	III
Space Needs .....	IV
Concept Design .....	V
Estimate of Probable Construction Cost .....	VI

### **Chapter 1: Existing Site and Facility Review**

Background.....	1.1
Existing Transit Vehicle Flow.....	1.3
Exterior Bus Parking and Circulation .....	1.6
Maintenance Building.....	1.9
Fuel Island .....	1.25
Wash Building.....	1.27
Administration / Operations Building .....	1.30
Old Bus Garage.....	1.31
New Bus Storage Building .....	1.33
Old Sun Van Building .....	1.35
Historic Significance .....	1.36

### **Chapter 2: Design Criteria**

#### Section 1: General Considerations

Acknowledgments .....	2.1.1
Background.....	2.1.2
Introduction .....	2.1.3
Methodology .....	2.1.4
Daily Activities.....	2.1.6
On-Site Traffic Movement.....	2.1.7

#### Section 2: Space Needs Program

Introduction .....	2.2.1
Space Needs Program.....	2.2.3

#### Section 3: Functional Requirements

Introduction .....	2.3.1
Maintenance (Offices) .....	2.3.2
Maintenance (Bays & Shops) .....	2.3.17

# TABLE OF CONTENTS

---

Materials Management .....	2.3.60
Fuel & Wash .....	2.3.69
Facility Maintenance .....	2.3.88
Agency Vehicle Parking .....	2.3.98
Private Vehicle Parking .....	2.3.100
Other Site Areas .....	2.3.101
<b>Section 4: Site &amp; Building Requirements</b>	
Codes, Standards, and Permits .....	2.4.1
Civil.....	2.4.1
Landscape .....	2.4.3
Structural.....	2.4.5
Architectural.....	2.4.7
Mechanical.....	2.4.10
Electrical.....	2.4.13
Plumbing.....	2.4.18
Alternative Fuel Impacts .....	2.4.23
Security .....	2.4.26
Signage and Graphics .....	2.4.27
Waste Handling .....	2.4.27
Facility Maintenance .....	2.4.28
<b>Chapter 3: Concept Design</b>	
Introduction .....	3.1
Current Functions.....	3.1
Existing Yale Site Layout.....	3.2
Existing Yale Maintenance Facility Floor Plan.....	3.4
Proposed 40' Fixed Route Maintenance Facility Floor Plan.....	3.6
Proposed 60' Fixed Route Maintenance Facility Floor Plan.....	3.8
Options Breakdown.....	3.10
Option 1(X) .....	3.12
Option 1(E)A.....	3.14
Option 1(E)B.....	3.16
Option 1(E)C.....	3.18
Option 2(E)A.....	3.20
Option 2(E)B.....	3.22
Option 2(E)C.....	3.24
Option 2(N)A.....	3.26



# TABLE OF CONTENTS

---

Option 2(N)B.....	3.28
Option 2(N)C.....	3.30
Option 3(X) .....	3.32
Option 3(E)A.....	3.34
Option 3(E)B.....	3.36
Option 3(E)C.....	3.38
Options Assessment.....	3.41
Concept Design Option Analysis.....	3.42
Concept Design Sub-Option Analysis.....	3.43

## **VOLUME II**

### **Appendix A: Sign-In Sheets**

Sign-In Sheets.....	A.1
---------------------	-----

### **Appendix B: Fleet Inventory**

Fleet Inventory.....	B.1
----------------------	-----

### **Appendix C: Component Data**

Engine / Transmission Storage .....	C.1
Component Rebuild Analysis .....	C.2

### **Appendix D: Fleet Projections**

Fleet Projections.....	D.1
------------------------	-----

### **Appendix E: Capacity Analysis**

Capacity Analysis.....	E.1
------------------------	-----

### **Appendix F: Equipment Inventory**

Introduction.....	F.1
Equipment Inventory List.....	F.2
Equipment Photos.....	F.9

### **Appendix G: Preliminary Equipment List**

Introduction.....	G.1
Equipment List.....	G.3

# TABLE OF CONTENTS

---

THIS PAGE LEFT INTENTIONALLY BLANK





# APPENDIX A: SIGN-IN SHEETS

**PARSONS  
BRINCKERHOFF**

**SIGN-IN SHEET**

ABQ :PROJECT NAME  
11:30 2/2/15 : DATE

NAME	ORGANIZATION	JOB TITLE	LOCATION	PHONE NUMBER	E-MAIL ADDRESS
Mike Martin	PB	Planner	Houston	281-589-5877	martinmi@pbworld.com
Jim S. Carrillo	ABQ Ride	Maintenance Manager	Albuquerque	505-764-6186	js carrillo@cabq.gov
Nick Cordova	CoA Trust	Building Maint Sup	Albuquerque	505-263-7924	Nick Cordova@cabq.gov
JAMES BIRD	ABQ-RIDE	Asst Main Manager	YALE	505-259-9975	jpbird@caso.gov
Bruce Brizzieri	AT&T RIDE	Director	Albuquerque Tempe, AZ	505 298 3435	brizzieri@cabq.gov

# APPENDIX A: SIGN-IN SHEETS

**PARSONS  
BRINCKERHOFF**

SIGN-IN SHEET

ABQ Yale :PROJECT NAME

2/3/15 : DATE

NAME	ORGANIZATION	JOB TITLE	LOCATION	PHONE NUMBER	E-MAIL ADDRESS
9:30 AM					
Mike Martin	PB	Planner	Houston	281 589 5877	martinmic@pbworld.com
Mark Probst	PB	Architect	Houston	281 589	probst@pbworld.com
Randy Jiron	Maintenance	Maintenance Mgt	Yale	505-331-3516	rjiron@cabq.gov
James Bird					
Tim Carrillo					
5:00 PM					
STEPHEN MEYERHEIN	MAINTENANCE SHOP SUPERVISOR		DAYTONA	505-764-6181	smeyerhein@cabq.gov
Jesus Torres	Swing Shift Supervisor			505 417-8370	JVTorres@cabq.gov
Jason Black	Vehicle Services Supervisor		Yale	505-459-8133	<del>Blackj@cabq.gov</del> Jpblack@cabq.gov

# APPENDIX A: SIGN-IN SHEETS

**PARSONS  
BRINCKERHOFF**

SIGN-IN SHEET

ABA Yale :PROJECT NAME

2/4/15 : DATE

9:00	NAME	ORGANIZATION	JOB TITLE	LOCATION	PHONE NUMBER	E-MAIL ADDRESS
	Mike Martin	PB	Planner	Houston	281 589 5877	martinm@pbworld.com
	Mark Probst	PB	Architect	Houston	281 589 5880	probst@pbworld.com
	Annette S. Paez	COA/TransitDpt.	Associate Director	ATC	(505)258-2619	apaez@caba.gov
10:30						
	Nick Cordoue	COA Transit	Building Supervisor	Yale	505-263-7924	Nick.Cordoue@caba.gov
	Steve Cordero	COA Transit	Transit Service Specialist	Yale	505-553 5924	Scordero@caba.gov
2:00	Wrap up					
	Randy Jiran	Maintenance	Materials Mgt	Douglas	505.931-3518	rjiran@caba.gov
	Nick Cordoue	COA Transit	Building Supervisor	Yale	505-263-7924	Nick.Cordoue@caba.gov
	Jim S Carrillo	COA Transit	Maintenance Manager	Yale	505-764-6186	jscarrillo@caba.gov
	Bruce Rizzieri	ABQRIDE	Director	ATC	7243100	brizzieri@caba.gov
IT						
	Stan Low	ABQRIDE-IT	Division manager	Yale	505-724-3114	StanLow@CABA.GOV
	NARONG JOE SARAPHON	ABQRIDE IT	TECH PROG MGR I	Yale	505-724-3113	SARAPHON@CABA.GOV

## **APPENDIX A: SIGN-IN SHEETS**

---

**THIS PAGE LEFT INTENTIONALLY BLANK**







# APPENDIX B: FLEET INVENTORY

## FLEET INVENTORY - BUSES

BUS NO.	VEHICLE OR SERIAL NO.	MAKE/MODEL	VEHICLE ISSUED TO	V.I.N.#	YR.	FUEL TYPE	LIC.#
302	NF-Series	Neoplan/AN-440	Bus maint./oper.	1N9TA1AA7VL013101	1996	CNG	G23523
305	NF-Series	Neoplan/AN-440	Bus maint./oper.	1N9TA1AA2VL013104	1996	CNG	G65320
306	NF-Series	Neoplan/AN-440	Bus maint./oper.	1N9TA1AA4VL013105	1996	CNG	G23519
307	NF-Series	Neoplan/AN-440	Bus maint./oper.	1N9TA1AA6VL013106	1996	CNG	G23518
308	NF-Series	Neoplan/AN-440	Bus maint./oper.	1N9TA1AA8VL013107	1996	CNG	G23517
309	NF-Series	Neoplan/AN-440	Bus maint./oper.	1N9TA1AAXVL013108	1996	CNG	G23516
310	NF-Series	Neoplan/AN-440	Bus maint./oper.	1N9TA1AA1VL013109	1996	CNG	G23515
314	NF-Series	Neoplan/AN-440	Bus maint./oper.	1N9TA1AA3VL013113	1996	CNG	G23622
317	NF-Series	Neoplan/AN-440	Bus maint./oper.	1N9TA1AA9VL013116	1996	CNG	G23619
318	NF-Series	Neoplan/AN-440	Bus maint./oper.	1N9TA1AA0VL013117	1996	CNG	G23618
320	NF-Series	Neoplan/AN-440	Bus maint./oper.	1N9TA1AA4VL013119	1996	CNG	G23616
322	NF-Series	Neoplan/AN-440	Bus maint./oper.	1N9TA1AA2VL013121	1996	CNG	G23614
323	NF-Series	Neoplan/AN-440	Bus maint./oper.	1N9TA1AA4VL013122	1996	CNG	G23613
324	NF-Series	Neoplan/AN-440	Bus maint./oper.	1N9TA1AA6VL013123	1996	CNG	G23612
327	NF-Series	Neoplan/AN-440	Bus maint./oper.	1N9TA1AA1VL013126	1996	CNG	G23609
329	NF-Series	Neoplan/AN-440	Bus maint./oper.	1N9TA1AA5VL013128	1996	CNG	G23607
330	NF-Series	Neoplan/AN-440	Bus maint./oper.	1N9TA1AA7VL013129	1996	CNG	G23606
333	NF-Series	Neoplan/AN-440	Bus maint./oper.	1N9TA1AA7VL013132	1996	CNG	G23512
334	NF-Series	Neoplan/AN-440	Bus maint./oper.	1N9TA1AA9VL013133	1996	CNG	G23511
335	NF-Series	Neoplan/AN-440	Bus maint./oper.	1N9TA1AA0VL013134	1996	CNG	G23510
336	NF-Series	Neoplan/AN-440	Bus maint./oper.	1N9TA1AA2VL013135	1996	CNG	G23505
339	NF-Series	Neoplan/AN-440	Bus maint./oper.	1N9TA1AA8VL013138	1996	CNG	G23508

BUS NO.	VEHICLE OR SERIAL NO.	MAKE/MODEL	VEHICLE ISSUED TO	V.I.N.#	YR.	FUEL TYPE	LIC.#
601	40' Low Floor	NewFlyer DE40LF	Bus maint/Oper	5FYC8FBOXECO44311	2014	CNG	
602	40' Low Floor	NewFlyer DE40LF	Bus maint./oper.	5FYC8FB01ECO44312	2014	CNG	
603	40' Low Floor	NewFlyer DE40LF	Bus maint./oper.	5FYC8FB03ECO44313	2014	CNG	
604	40' Low Floor	NewFlyer DE40LF	Bus maint./oper.	5FYC8FB05ECO44314	2014	CNG	
605	40' Low Floor	NewFlyer DE40LF	Bus maint./oper.	5FYC8FB07ECO44315	2014	CNG	
606	40' Low Floor	NewFlyer DE40LF	Bus maint./oper.	5FYC8FB09ECO44316	2014	CNG	
607	40' Low Floor	NewFlyer DE40LF	Bus maint./oper.	5FYC8FBOOECO44317	2014	CNG	

# APPENDIX B: FLEET INVENTORY

## FLEET INVENTORY - BUSES

608	40' Low Floor	NewFlyer DE40LF	Bus maint./oper.	5FYC8FBO2ECO44318	2014	CNG	
609	40' Low Floor	NewFlyer DE40LF	Bus maint./oper.	5FYC8FBO4ECO44319	2014	CNG	
610	40' Low Floor	NewFlyer DE40LF	Bus maint./oper.	5FYC8FBO0ECO44320	2014	CNG	
611	40' Low Floor	NewFlyer DE40LF	Bus maint./oper.	5FYC8FBO2ECO44321	2014	CNG	
612	40' Low Floor	NewFlyer DE40LF	Bus maint./oper.	5FYC8FBO4ECO44322	2014	CNG	
613	40' Low Floor	NewFlyer DE40LF	Bus maint./oper.	5FYC8FBO6ECO44323	2014	CNG	
614	40' Low Floor	NewFlyer DE40LF	Bus maint./oper.	5FYC8FBO8ECO44324	2014	CNG	
615	40' Low Floor	NewFlyer DE40LF	Bus maint./oper.	5FYC8FBOXECO44325	2014	CNG	
616	40' Low Floor	NewFlyer DE40LF	Bus maint./oper.	5FYC8FBO1ECO44326	2014	CNG	
617	40' Low Floor	NewFlyer DE40LF	Bus maint./oper.	5FYC8FBO3ECO44327	2014	CNG	
618	40' Low Floor	NewFlyer DE40LF	Bus maint./oper.	5FYC8FBO5ECO44328	2014	CNG	
619	40' Low Floor	NewFlyer DE40LF	Bus maint./oper.	5FYC8FBO7ECO44329	2014	CNG	
620	40' Low Floor	NewFlyer DE40LF	Bus maint./oper.	5FYC8FBO3ECO44330	2014	CNG	
621	40' Low Floor	NewFlyer DE40LF	Bus maint./oper.	5FYC8FBO5ECO44331	2014	CNG	

701	40' Low Floor	NewFlyer DE40LF	Bus maint./oper.	5FYH5FV097C032504	2007	Uls Diesel Elect.Hyb. G72109
702	40' Low Floor	NewFlyer DE40LF	Bus maint./oper.	5FYH5FV007C032505	2007	Uls Diesel Elect.Hyb. G72110
703	40' Low Floor	NewFlyer DE40LF	Bus maint./oper.	5FYH5FV027C032506	2007	Uls Diesel Elect.Hyb. G72111
704	40' Low Floor	NewFlyer DE40LF	Bus maint./oper.	5FYH5FV047C032507	2007	Uls Diesel Elect.Hyb. G72112
705	40' Low Floor	NewFlyer DE40LF	Bus maint./oper.	5FYH5FV067C032508	2007	Uls Diesel Elect.Hyb. G72113
706	40' Low Floor	NewFlyer DE40LF	Bus maint./oper.	5FYH5FV087C032509	2007	Uls Diesel Elect.Hyb. G72114
707	40' Low Floor	NewFlyer DE40LF	Bus maint./oper.	5FYH5FV047C032510	2007	Uls Diesel Elect.Hyb. G72115
708	40' Low Floor	NewFlyer DE40LF	Bus maint./oper.	5FYH5FV067C032511	2007	Uls Diesel Elect.Hyb. G72116
709	40' Low Floor	NewFlyer DE40LF	Bus maint./oper.	5FYH5FV087C032512	2007	Uls Diesel Elect.Hyb. G72141
710	40' Low Floor	NewFlyer DE40LF	Bus maint./oper.	5FYH5FV0X7C032513	2007	Uls Diesel Elect.Hyb. G72142

# APPENDIX B: FLEET INVENTORY

## FLEET INVENTORY - BUSES

711	40' Low Floor	NewFlyer DE40LF	Bus maint./oper.	5FYH5FV017C032514	2007	Uls Diesel Elect.Hyb.	G72143
712	40' Low Floor	NewFlyer DE40LF	Bus maint./oper.	5FYH5FV037C032515	2007	Uls Diesel Elect.Hyb.	G72144
713	40' Low Floor	NewFlyer DE40LF	Bus maint./oper.	5FYH5FV057C032516	2007	Uls Diesel Elect.Hyb.	G72125
714	40' Low Floor	NewFlyer DE40LF	Bus maint./oper.	5FYH5FV077C032517	2007	Uls Diesel Elect.Hyb.	G72126
715	40' Low Floor	NewFlyer DE40LF	Bus maint./oper.	5FYH5FV097C032518	2007	Uls Diesel Elect.Hyb.	G72127
716	40' Low Floor	NewFlyer DE40LF	Bus maint./oper.	5FYH5FV007C032519	2007	Uls Diesel Elect.Hyb.	G72128
717	40' Low Floor	NewFlyer DE40LF	Bus maint./oper.	5FYH5FV077C032520	2007	Uls Diesel Elect.Hyb.	G72129
718	40' Low Floor	NewFlyer DE40LF	Bus maint./oper.	5FYH5FV097C032521	2007	Uls Diesel Elect.Hyb.	G72130
719	40' Low Floor	NewFlyer DE40LF	Bus maint./oper.	5FYH5FV007C032522	2007	Uls Diesel Elect.Hyb.	G72131
720	40' Low Floor	NewFlyer DE40LF	Bus maint./oper.	5FYH5FV027C032523	2007	Uls Diesel Elect.Hyb.	G72132
721	40' Low Floor	NewFlyer DE40LF	Bus maint./oper.	5FYH5FV047C032524	2007	Uls Diesel Elect.Hyb.	G72133
722	40' Low Floor	NewFlyer DE40LF	Bus maint./oper.	5FYH5FV067C032525	2007	Uls Diesel Elect.Hyb.	G72134
723	40' Low Floor	NewFlyer DE40LF	Bus maint./oper.	5FYH5FV087C032526	2007	Uls Diesel Elect.Hyb.	G72135
724	40' Low Floor	NewFlyer DE40LF	Bus maint./oper.	5FYH5FV0X7C032527	2007	Uls Diesel Elect.Hyb.	G72136
725	40' Low Floor	NewFlyer DE40LF	Bus maint./oper.	5FYH5FV017C032528	2007	Uls Diesel Elect.Hyb.	G72137
726	40' Low Floor	NewFlyer DE40LF	Bus maint./oper.	5FYH5FV037C032529	2007	Uls Diesel Elect.Hyb.	G72138
727	40' Low Floor	NewFlyer DE40LF	Bus maint./oper.	5FYH5FV0X7C032530	2007	Uls Diesel Elect.Hyb.	G72139
728	40' Low Floor	NewFlyer DE40LF	Bus maint./oper.	5FYH5FV017C032531	2007	Uls Diesel Elect.Hyb.	G72140
729	40' Low Floor	NewFlyer DE40LF	Bus maint./oper.	5FYH5FV097C032647	2007	Uls Diesel Elect.Hyb.	G72333
730	40' Low Floor	NewFlyer DE40LF	Bus maint./oper.	5FYH5FV007C032648	2007	Uls Diesel Elect.Hyb.	G72332
731	40' Low Floor	NewFlyer DE40LF	Bus maint./oper.	5FYH5FV027C032649	2007	Uls Diesel Elect.Hyb.	G72334
732	40' Low Floor	NewFlyer DE40LF	Bus maint./oper.	5FYH5FV097C032650	2007	Uls Diesel Elect.Hyb.	G72335
733	40' Low Floor	NewFlyer DE40LF	Bus maint./oper.	5FYH5FV007C032651	2007	Uls Diesel Elect.Hyb.	G72336
734	40' Low Floor	NewFlyer DE40LF	Bus maint./oper.	5FYH5FV027C032652	2007	Uls Diesel Elect.Hyb.	G72337
735	40' Low Floor	NewFlyer DE40LF	Bus maint./oper.	5FYH5FV047C032653	2007	Uls Diesel Elect.Hyb.	G72338
736	40' Low Floor	NewFlyer DE40LF	Bus maint./oper.	5FYH5FV067C032654	2007	Uls Diesel Elect.Hyb.	G72339

# APPENDIX B: FLEET INVENTORY

## FLEET INVENTORY - BUSES

737	40' Low Floor	NewFlyer DE40LF	Bus maint./oper.	5FYH5FV087C032655	2007	Uls Diesel Elect.Hyb.	G72340
738	40' Low Floor	NewFlyer DE40LF	Bus maint./oper.	5FYH5FV0X7C032656	2007	Uls Diesel Elect.Hyb.	G72341
739	40' Low Floor	NewFlyer DE40LF	Bus maint./oper.	5FYH5FV017C032657	2007	Uls Diesel Elect.Hyb.	G72342
740	40' Low Floor	NewFlyer DE40LF	Bus maint./oper.	5FYH5FV037C032658	2007	Uls Diesel Elect.Hyb.	G72343
741	40' Low Floor	NewFlyer DE40LF	Bus maint./oper.	5FYH5FV057C032659	2007	Uls Diesel Elect.Hyb.	G72344
742	40' Low Floor	NewFlyer DE40LF	Bus maint./oper.	5FYH5FV017C032660	2007	Uls Diesel Elect.Hyb.	G72345
743	40' Low Floor	NewFlyer DE40LF	Bus maint./oper.	5FYH5FV037C032661	2007	Uls Diesel Elect.Hyb.	G72346
744	40' Low Floor	NewFlyer DE40LF	Bus maint./oper.	5FYH5FV057C032662	2007	Uls Diesel Elect.Hyb.	G72347
745	40' Low Floor	NewFlyer DE40LF	Bus maint./oper.	5FYH5FV077C032663	2007	Uls Diesel Elect.Hyb.	G72348
746	40' Low Floor	NewFlyer DE40LF	Bus maint./oper.	5FYH5FV097C032664	2007	Uls Diesel Elect.Hyb.	G72349
747	40' Low Floor	NewFlyer DE40LF	Bus maint./oper.	5FYH5FV007C032665	2007	Uls Diesel Elect.Hyb.	G72350
748	40' Low Floor	NewFlyer DE40LF	Bus maint./oper.	5FYH5FV027C032666	2007	Uls Diesel Elect.Hyb.	G72351
749	40' Low Floor	NewFlyer DE40LF	Bus maint./oper.	5FYH5FV047C032667	2007	Uls Diesel Elect.Hyb.	G72352
750	40' Low Floor	NewFlyer DE40LF	Bus maint./oper.	5FYH5FV067C032668	2007	Uls Diesel Elect.Hyb.	G72354
751	40' Low Floor	NewFlyer DE40LF	Bus maint./oper.	5FYH5FV087C032669	2007	Uls Diesel Elect.Hyb.	G72355
752	40' Low Floor	NewFlyer DE40LF	Bus maint./oper.	5FYH5FV047C032670	2007	Uls Diesel Elect.Hyb.	G72356
753	40' Low Floor	NewFlyer DE40LF	Bus maint./oper.	5FYH5FV067C032671	2007	Uls Diesel Elect.Hyb.	G72357
754	40' Low Floor	NewFlyer DE40LF	Bus maint./oper.	5FYH5FV087C032672	2007	Uls Diesel Elect.Hyb.	G72358
755	40' Low Floor	NewFlyer DE40LF	Bus maint./oper.	5FYH5FV0X7C032673	2007	Uls Diesel Elect.Hyb.	G72359
756	40' Low Floor	NewFlyer DE40LF	Bus maint./oper.	5FYH5FV017C032674	2007	Uls Diesel Elect.Hyb.	G72360
757	40' Low Floor	NewFlyer DE40LF	Bus maint./oper.	5FVH5FV048C033707	2007	Uls Diesel Elect.Hyb.	G75114
758	40' Low Floor	NewFlyer DE40LF	Bus maint./oper.	5FYH5FV068C033708	2007	Uls Diesel Elect.Hyb.	G75509
950	40' Low Floor	NewFlyer DE40LF	Bus maint./oper.	5FYH5FV099B035086	2009	Uls Diesel Elect.Hyb.	G76159

# APPENDIX B: FLEET INVENTORY

## FLEET INVENTORY - BUSES

951	40' Low Floor	NewFlyer DE40LF	Bus maint./oper.	5FYH5FV009B035087	2009	Elect.Hyb. ULS Diesel	G76264
952	40' Low Floor	NewFlyer DE40LF	Bus maint./oper.	5FYH5FV029B035088	2009	Elect.Hyb. ULS Diesel	G76265
953	40' Low Floor	NewFlyer DE40LF	Bus maint./oper.	5FYH5FV049B035089	2009	Elect.Hyb. ULS Diesel	G76266
954	40' Low Floor	NewFlyer DE40LF	Bus maint./oper.	5FYH5FV009B035090	2009	Elect.Hyb. ULS Diesel	G76267
955	40' Low Floor	NewFlyer DE40LF	Bus maint./oper.	5FYH5FV029B035091	2009	Elect.Hyb. ULS Diesel	G76263
956	40' Low Floor	NewFlyer DE40LF	Bus maint./oper.	5FYH5FV049B035092	2009	Elect.Hyb. ULS Diesel	G76483
957	40' Low Floor	NewFlyer DE40LF	Bus maint./oper.	5FYH5FV069B035093	2009	Elect.Hyb. ULS Diesel	G76482
958	40' Low Floor	NewFlyer DE40LF	Bus maint./oper.	5FYH5FV089B035094	2009	Elect.Hyb. ULS Diesel	G76490
959	40' Low Floor	NewFlyer DE40LF	Bus maint./oper.	5FYH5FV0X9B035095	2009	Elect.Hyb. ULS Diesel	G76499
960	40' Low Floor	NewFlyer DE40LF	Bus maint./oper.	5FYH5FV019B035096	2009	Elect.Hyb. ULS Diesel	G76489
961	40' Low Floor	NewFlyer DE40LF	Bus maint./oper.	5FYH5FV039B035097	2009	Elect.Hyb. ULS Diesel	G76488
962	40' Low Floor	NewFlyer DE40LF	Bus maint./oper.	5FYH5FV059B035098	2009	Elect.Hyb. ULS Diesel	G76487
963	40' Low Floor	NewFlyer DE40LF	Bus maint./oper.	5FYH5FV079B035099	2009	Elect.Hyb. ULS Diesel	G76486
964	40' Low Floor	NewFlyer DE40LF	Bus maint./oper.	5FYH5FV0X9B035100	2009	Elect.Hyb. ULS Diesel	G76485
965	40' Low Floor	NewFlyer DE40LF	Bus maint./oper.	5FYH5FV019B035101	2009	Elect.Hyb. ULS Diesel	G76484
966	40' Low Floor	NewFlyer DE40LF	Bus maint./oper.	5FYH5FV039B035102	2009	Elect.Hyb. ULS Diesel	G76861
967	40' Low Floor	NewFlyer DE40LF	Bus maint./oper.	5FYH5FV039B035103	2009	Elect.Hyb. ULS Diesel	G76500
968	40' Low Floor	NewFlyer DE40LF	Bus maint./oper.	5FYH5FV079B035104	2009	Elect.Hyb. ULS Diesel	G76491
969	40' Low Floor	NewFlyer DE40LF	Bus maint./oper.	5FYH5FV099B035105	2009	Elect.Hyb. ULS Diesel	G76868
970	40' Low Floor	NewFlyer DE40LF	Bus maint./oper.	5FYH5FV009B035106	2009	Elect.Hyb. ULS Diesel	G76862
971	40' Low Floor	NewFlyer DE40LF	Bus maint./oper.	5FYH5FV029B035107	2009	Elect.Hyb. ULS Diesel	G76863
972	40' Low Floor	NewFlyer DE40LF	Bus maint./oper.	5FYH5FV049B035108	2009	Elect.Hyb. ULS Diesel	G76864
973	40' Low Floor	NewFlyer DE40LF	Bus maint./oper.	5FYH5FV069B035109	2009	Elect.Hyb. ULS Diesel	G76865
974	40' Low Floor	NewFlyer DE40LF	Bus maint./oper.	5FYH5FV029B035110	2009	Elect.Hyb. ULS Diesel	G76866
975	40' Low Floor	NewFlyer DE40LF	Bus maint./oper.	5FYH5FV049B035111	2009	Elect.Hyb. ULS Diesel	G76867
976	40' Low Floor	NewFlyer DE40LF	Bus maint./oper.	5FYH5FV069B035112	2009	Elect.Hyb.	G76869



# APPENDIX B: FLEET INVENTORY

## FLEET INVENTORY - BUSES

977	40' Low Floor	NewFlyer DE40LF	Bus maint./oper.	5FYH5FV089B035113	2009	Uls Diesel Elect.Hyb.	G76870
978	40' Low Floor	NewFlyer DE40LF	Bus maint./oper.	5FYH5FV0X9B035114	2009	Uls Diesel Elect.Hyb.	G76860
979	40' Low Floor	NewFlyer DE40LF	Bus maint./oper.	5FYH5FV019B035115	2009	Uls Diesel Elect.Hyb.	G76957
980	40' Low Floor	NewFlyer DE40LF	Bus maint./oper.	5FYH5FV039B035116	2009	Uls Diesel Elect.Hyb.	G76956
981	40' Low Floor	NewFlyer DE40LF	Bus maint./oper.	5FYH5FV059B035117	2009	Uls Diesel Elect.Hyb.	G78950
982	40' Low Floor	NewFlyer DE40LF	Bus maint./oper.	5FYH5FV059B035876	2009	Uls Diesel Elect.Hyb.	G78952
983	40' Low Floor	NewFlyer DE40LF	Bus maint./oper.	5FYH5FV079B035877	2009	Uls Diesel Elect.Hyb.	G78951
6401	60' Low Floor	New Flyer DE60LF	Bus maint./oper.	5FYH2UW0X4U027023	2004	Uls Diesel Elect.Hyb.	G78258
6402	60' Low Floor	New Flyer DE60LF	Bus maint./oper.	5FYH2UW014U027024	2004	Uls Diesel Elect.Hyb.	G78259
6403	60' Low Floor	New Flyer DE60LF	Bus maint./oper.	5FYH2UW034U027025	2004	Uls Diesel Elect.Hyb.	G78260
6404	60' Low Floor	New Flyer DE60LF	Bus maint./oper.	5FYH2UW054U027026	2004	Uls Diesel Elect.Hyb.	78261
6405	60' Low Floor	New Flyer DE60LF	Bus maint./oper.	5FYH2UW074U027027	2004	Uls Diesel Elect.Hyb.	G78262
6406	60' Low Floor	New Flyer DE60LF	Bus maint./oper.	5FYH2UW094U027028	2004	Uls Diesel Elect.Hyb.	G78263
6407	60' Low Floor	New Flyer DE60LF	Bus maint./oper.	5FYH2UW004U027029	2004	Uls Diesel Elect.Hyb.	G78264
6408	60' Low Floor	New Flyer DE60LF	Bus maint./oper.	5FYH2UW074U027030	2004	Uls Diesel Elect.Hyb.	G78265
6409	60' Low Floor	New Flyer DE60LF	Bus maint./oper.	5FYH2UW094U027031	2004	Uls Diesel Elect.Hyb.	G78266
6410	60' Low Floor	New Flyer DE60LF	Bus maint./oper.	5FYH2UW004U027032	2004	Uls Diesel Elect.Hyb.	78267
6411	60' Low Floor	New Flyer DE60LF	Bus maint./oper.	5FYH2UW024U027033	2004	Uls Diesel Elect.Hyb.	59722
6412	60' Low Floor	New Flyer DE60LF	Bus maint./oper.	5FYH2UW044U027034	2004	Uls Diesel Elect.Hyb.	G79974
6601	60' Low Floor	New Flyer DE60LF	Bus maint./oper.	5FYH4YW076C031072	2006	Uls Diesel Elect.Hyb.	G69036
6602	60' Low Floor	New Flyer DE60LF	Bus maint./oper.	5FYH4YW096C031073	2006	Uls Diesel Elect.Hyb.	G69037



# APPENDIX B: FLEET INVENTORY

## FLEET INVENTORY - BUSES

6603	60' Low Floor	New Flyer DE60LF	Bus maint./oper.	5FYH4YW006C031074	2006	Uls Diesel Elect.Hyb.	G69038
6604	60' Low Floor	New Flyer DE60LF	Bus maint./oper.	5FYH4YW026C031075	2006	Uls Diesel Elect.Hyb.	G69039
6605	60' Low Floor	New Flyer DE60LF	Bus maint./oper.	5FYH4YW046C031076	2006	Uls Diesel Elect.Hyb.	G69040
6606	60' Low Floor	New Flyer DE60LF	Bus maint./oper.	5FYH4YW066C031077	2006	Uls Diesel Elect.Hyb.	G69041
6901	60' Low Floor	New Flyer DE60LF	Bus maint./oper.	5FYH5YU099C035449	2009	Uls Diesel Elect.Hyb.	G77232
6902	60' Low Floor	New Flyer DE60LF	Bus maint./oper.	5FYH5YU059C035450	2009	Uls Diesel Elect.Hyb.	G77231
6903	60' Low Floor	New Flyer DE60LF	Bus maint./oper.	5FYH5YU079C035451	2009	Uls Diesel Elect.Hyb.	G77234
6904	60' Low Floor	New Flyer DE60LF	Bus maint./oper.	5FYH5YU099C035452	2009	Uls Diesel Elect.Hyb.	G77233
6905	60' Low Floor	New Flyer DE60LF	Bus maint./oper.	5FYH5YU009C035453	2009	Uls Diesel Elect.Hyb.	G78958
6906	60' Low Floor	New Flyer DE60LF	Bus maint./oper.	5FYH5YU029C035454	2009	Uls Diesel Elect.Hyb.	G78957

# APPENDIX B: FLEET INVENTORY

## FLEET INVENTORY - SUN VAN

VAN NO.#	VEHICLE NO.#	MAKE/MODEL	VEHICLE ISSUED TO	V.I.N.#	YR.	FUEL TYPE	LIC.#
2801	282859	Ford E-450 Starcraft	Van Maint./Oper	1FD4E45P38DA32859	2008	Ultra low sulfer Diesel	G74122
2802	282860	Ford E-450 Starcraft	Van Maint./Oper	1FD4E45PX8DA32860	2008	Ultra low sulfer Diesel	G74123
2803	282861	Ford E-450 Starcraft	Van Maint./Oper	1FD4E45P18DA32861	2008	Ultra low sulfer Diesel	G74124
2804	285804	Ford E-450 Starcraft	Van Maint./Oper	1FD4E45P48DA35804	2008	Ultra low sulfer Diesel	G74125
2805	285805	Ford E-450 Starcraft	Van Maint./Oper	1FD4E45P68DA35805	2008	Ultra low sulfer Diesel	G74126
2806	285806	Ford E-450 Starcraft	Van Maint./Oper	1FD4E45P88DA35806	2008	Ultra low sulfer Diesel	G67966
2807	285808	Ford E-450 Starcraft	Van Maint./Oper	1FD4E45P18DA35808	2008	Ultra low sulfer Diesel	G74127
2808	285809	Ford E-450 Starcraft	Van Maint./Oper	1FD4E45P38DA35809	2008	Ultra low sulfer Diesel	G74128
2809	285811	Ford E-450 Starcraft	Van Maint./Oper	1FD4E45P18DA35811	2008	Ultra low sulfer Diesel	G74129
2810	285812	Ford E-450 Starcraft	Van Maint./Oper	1FD4E45P38DA35812	2008	Ultra low sulfer Diesel	G74130
2811	281041	Ford E-450 Starcraft	Van Maint./Oper	1FD4E45P38DA51041	2008	Ultra low sulfer Diesel	G67967
2812	281042	Ford E-450 Starcraft	Van Maint./Oper	1FD4E45P58DA51042	2008	Ultra low sulfer Diesel	G74131
2813	281043	Ford E-450 Starcraft	Van Maint./Oper	1FD4E45P78DA51043	2008	Ultra low sulfer Diesel	G74132
2814	281044	Ford E-450 Starcraft	Van Maint./Oper	1FD4E45P98DA51044	2008	Ultra low sulfer Diesel	G74133
2815	281045	Ford E-450 Starcraft	Van Maint./Oper	1FD4E45P08DA51045	2008	Ultra low sulfer Diesel	G74134
2816	281046	Ford E-450 Starcraft	Van Maint./Oper	1FD4E45P28DA51046	2008	Ultra low sulfer Diesel	G74135
2817	281047	Ford E-450 Starcraft	Van Maint./Oper	1FD4E45P48DA51047	2008	Ultra low sulfer Diesel	G74136
2818	281048	Ford E-450 Starcraft	Van Maint./Oper	1FD4E45P68DA51048	2008	Ultra low sulfer Diesel	G63667
2819	281049	Ford E-450 Starcraft	Van Maint./Oper	1FD4E45P88DA51049	2008	Ultra low sulfer Diesel	G63668
2820	281050	Ford E-450 Starcraft	Van Maint./Oper	1FD4E45P48DA51050	2008	Ultra low sulfer Diesel	G63669
2821	281051	Ford E-450 Starcraft	Van Maint./Oper	1FD4E45P68DA51051	2008	Ultra low sulfer Diesel	G63670
2822	281052	Ford E-450 Starcraft	Van Maint./Oper	1FD4E45P88DA51052	2008	Ultra low sulfer Diesel	G63671
2823	281054	Ford E-450 Starcraft	Van Maint./Oper	1FD4E45P18DA51054	2008	Ultra low sulfer Diesel	G73952
2824	281055	Ford E-450 Starcraft	Van Maint./Oper	1FD4E45P38DA51055	2008	Ultra low sulfer Diesel	G63672
2825	281056	Ford E-450 Starcraft	Van Maint./Oper	1FD4E45P58DA51056	2008	Ultra low sulfer Diesel	G63673

Page 4 of 6

# APPENDIX B: FLEET INVENTORY

## FLEET INVENTORY - SUN VAN

2826	281057	Ford E-450 Starcraft	Van Maint./Oper	1FD4E45P78DA51057	2008	Ultra low sulfer Diesel	G67968
2827	281058	Ford E-450 Starcraft	Van Maint./Oper	1FD4E45P98DA51058	2008	Ultra low sulfer Diesel	G63674
2828	281059	Ford E-450 Starcraft	Van Maint./Oper	1FD4E45P08DA51059	2008	Ultra low sulfer Diesel	G63675
2830	285810	Ford E-450 Starcraft	Van Maint./Oper	1FD4E45PX8DA35810	2008	Ultra low sulfer Diesel	G74185
2831	281053	Ford E-450 Starcraft	Van Maint./Oper	1FD4E45PX8DA51053	2008	Ultra low sulfer Diesel	G74186
1201		Ford E-350 Glaval Universal	van maint/oper.	1FDEE3FS0CDA19254	2012	Unleaded	G-85892
1202		Ford E-350 Glaval Universal	van maint/oper.	1FDEE3FS6CDA54123	2012	Unleaded	G-85891
1203		Ford E-350 Glaval Universal	van maint/oper.	1FDEE3FS8CDA54124	2012	Unleaded	G-85890
1204		Ford E-350 Glaval Universal	van maint/oper.	1FDEE3FSXCDA54125	2012	Unleaded	G-85889
1205		Ford E-350 Glaval Universal	Van Maint./Oper	1FDEE3FS1CDA54126	2012	Unleaded	G-85888
1206		Ford E-350 Glaval Universal	Van Maint./Oper	1FDEE3FS3CDA54127	2012	Unleaded	G-85887
1207		Ford E-350 Glaval Universal	Van Maint./Oper	1FDEE3FS5CDA54128	2012	Unleaded	G-85886
1208		Ford E-350 Glaval Universal	Van Maint./Oper	1FDEE3FS7CDA54129	2012	Unleaded	G-85885
1209		Ford E-350 Glaval Universal	Van Maint./Oper	1FDEE3FS3CDA54130	2012	Unleaded	G-85884
1210		Ford E-350 Glaval Universal	Van Maint./Oper	1FDEE3FS5CDA54131	2012	Unleaded	G-85883
1211		Ford E-350 Glaval Universal	Van Maint./Oper	1FDEE3FS7CDA54132	2012	Unleaded	G-85882
1212		Ford E-350 Glaval Universal	Van Maint./Oper	1FDEE3FS9CDA54133	2012	Unleaded	G-85881
1213		Ford E-350 Glaval Universal	Van Maint./Oper	1FDEE3FS0CDA54134	2012	Unleaded	G-85880
1214		Ford E-350 Glaval Universal	Van Maint./Oper	1FDEE3FS2CDA54135	2012	Unleaded	G-85879
1215		Ford E-350 Glaval Universal	Van Maint./Oper	1FDEE3FS4CDA54136	2012	Unleaded	G-85878
1216		Ford E-350 Glaval Universal	Van Maint./Oper	1FDEE3FS6CDA54140	2012	Unleaded	G-85877
1217		Ford E-350 Glaval Universal	Van Maint./Oper	1FDEE3FS8CDA54138	2012	Unleaded	G-85876
1218		Ford E-350 Glaval Universal	Van Maint./Oper	1FDEE3FSXCDA54139	2012	Unleaded	G-85875
1219		Ford E-350 Glaval Universal	Van Maint./Oper	1FDEE3FS8CDA54137	2012	Unleaded	G-85874
1220		Ford E-350 Glaval Universal	Van Maint./Oper	1FDEE3FS8CDA54141	2012	Unleaded	G-85873
1221		Ford E-350 Glaval Universal	Van Maint./Oper	1FDEE3FSXCDA54142	2012	Unleaded	G-85872

# APPENDIX B: FLEET INVENTORY

## FLEET INVENTORY - SUN VAN

1222	Ford E-350 Glaval Universal Van Maint./Oper	1FDEE3FS1CDA54143	2012	Unleaded	G-58571
1223	Ford E-350 Glaval Universal Van Maint./Oper	1FDEE3FS3CDA54144	2012	Unleaded	G-85870
1224	Ford E-350 Glaval Universal Van Maint./Oper	1FDEE3FS5CDA54145	2012	Unleaded	G-85869
1225	Ford E-350 Glaval Universal Van Maint./Oper	1FDEE3FS7CDA54146	2012	Unleaded	G-85868
1226	Ford E-350 Glaval Universal Van Maint./Oper	1FDEE3FS9CDA54147	2012	Unleaded	G-85867
1227	Ford E-350 Glaval Universal Van Maint./Oper	1FDEE3FS0CDA54148	2012	Unleaded	G-85866
1228	Ford E-350 Glaval Universal Van Maint./Oper	1FDEE3FS2CDA54149	2012	Unleaded	G-85865
1229	Ford E-350 Glaval Universal Van Maint./Oper	1FDEE3FS9CDA54150	2012	Unleaded	G-85864
1230	Ford E-350 Glaval Universal Van Maint./Oper	1FDEE3FS0CDA54151	2012	Unleaded	G-85863
1231	Ford E-350 Glaval Universal Van Maint./Oper	1FDEE3FS2CDA54152	2012	Unleaded	G-85862
1232	Ford E-350 Glaval Universal Van Maint./Oper	1FDEE3FS4CDA54153	2013	Unleaded	G-85861
1233	Ford E-350 Glaval Universal Van Maint./Oper	1FDEE3FS6CDA54154	2014	Unleaded	G-85860
1234	Ford E-350 Glaval Universal Van Maint./Oper	1FDEE3FS8CDA54155	2015	Unleaded	G-85859
1235	Ford E-350 Glaval Universal Van Maint./Oper	1FDEE3FSXCDA54156	2016	Unleaded	G-85858
1236	Ford E-350 Glaval Universal Van Maint./Oper	1FDEE3FS1CDA54157	2017	Unleaded	G-85857
1237	Ford E-350 Glaval Universal Van Maint./Oper	1FDEE3FS5CDA54158	2018	Unleaded	
1238	Ford E-350 Glaval Universal Van Maint./Oper	1FDEE3FS5CDA54159	2019	Unleaded	G-85856
1239	Ford E-350 Glaval Universal Van Maint./Oper	1FDEE3FS6CDA54160	2019	Unleaded	
1240	Ford E-350 Glaval Universal Van Maint./Oper	1FDEE3FS5CDA54161	2019	Unleaded	G-85855

# APPENDIX B: FLEET INVENTORY

## FLEET INVENTORY - NON-REVENUE VEHICLES

TRANSIT NO.#	VEHICLE NO.#	MAKE/MODEL	VEHICLE ISSUED TO	V.I.N.#	YR.	FUEL TYPE	LIC.#
273530	273530	White Transit Bus	Maint./ Oper.	M3530	1927	Unleaded	G25128

### PAINT CREW

260115	260115	Ford 1.5 Ton F-450	Paint Crew	1FDXF46P06EB00115	2006	Ultra low sulfur Diesel	G64993
263760	263760	Chevy 1 Ton Fltbd	Paint Crew	1GBJC34206E123760	2006	Ultra low sulfur Diesel	G65246
956716	956716	Utility Accutrak Trailer	Paint Crew	1B9FU162351076716	1995	N/A	G29218

### BUILDING MAINTENANCE

#### Yale

971181	971181	Chevy 3/4 ton 4x4	Building Main.Crw.	1GCEK19R4VE191181	1997	Unleaded	G24530
245765	245765	Utility Justin"C"Trailer	Building Main.Crw.	1J9CE16274C115765	2004	N/A	G62925
7140	227140	PJ Utility Trailer	Building Main.Crw.	4P5TD162131047140	2002	N/A	G58366
*005053	*005053	Chevy C-3500 D-truck	Building Main.Crw.	1GBJC34J3YF485053	2000	Unleaded	G44341
O11340	O11340	Road Boss Trailer	Building Main.Crw.	5C3HH21251100134	2002	N/A	G70460
211043	211043	F-450 flat bed	Building Main.Crw.	1FDUF5GT0BEBE91043	2011	Diesel	G87554
211044	211044	F-450 flat bed	Building Main.Crw.	1FDUF5GT9EB901044	2011	Diesel	G87535
258871	258871	Chevy Colo. Trk.	Building Main.Crw.	1GCCS148968138871	2005	E-85 Unleaded	G64092

#### Daytona

OO3208	OO3204	FORD RANGER	Building Main.Crw.	1FTYR14V3YTB12147	2000	Unleaded	G34000
1504	960807	Tennant Sweeper	Building Main.Crw.	8400-10807	1996	Propane	N/A
1505	246039	Tennant Sweeper	Building Main.Crw.	209179 800-6039	2004	Unleaded	N/A
945305	945305	853 Bobcat	Building Main.Crw.	512815305	1994	Diesel	N/A
252494	252494	Chevy Colo. Trk.	Nick Cordova	1GCCS148368142494	2005	Unleaded	G64090
100088	100088	Cyclone steamer	Building Main.Crw.	0945004ws001010088	2010	Diesel	n/a
211045	211045	F-450 flat bed	Building Main.Crw.	1FDUF5GT0BEBE901045	2011	Diesel	G87536
211046	211046	F-450 flat bed	Building Main.Crw.	1FDUF5GT2BEBE90146	2011	Diesel	G87537
245311	245311	Advance Sweeper	Building Main.Crw.	1805311	2004	Propane	N/A
234946	234946	Ford superduty crew	Building Main.Crw.	1FTSW30S03EC74946	2003	Unleaded	G55422

### TECHNICAL DIVISION

972404	972404	Ford Ranger	IT Division	1FTCR10U0VPB58039	1997	Unleaded	G33999
--------	--------	-------------	-------------	-------------------	------	----------	--------

### FINANCE DIVISION

255447	255447	Chevy Impala	Finance Division	2G1WF52K759325447	2005	Unleaded	G61823
220841	220841	Crown Victoria		2FAFP71W83X150841	2002	Unleaded	G54519



# APPENDIX B: FLEET INVENTORY

## FLEET INVENTORY - NON-REVENUE VEHICLES

### SECURITY

263358	263358	Chevy Tahoe	John Baker	1GNEC13Z46R153358	2006	Unleaded	G65673
270799	270799	Chevy Tahoe	patrol	1GNFK03057R350799	2007	Unleaded	G69674
227753	227753	Chevy Tahoe	patrol	1GNEC13Z32J327753	2002	Unleaded	G53674
OO3204	OO3208	FORD RANGER	Patrol	1FTYR14V7YTB13149	2000	Unleaded	G45830

### PLANNING DIVISION

235366	235366	Crown Victoria	Building Main.Crw.	2FAFP71W53X115366	2003	Unleaded	G-51089
--------	--------	----------------	--------------------	-------------------	------	----------	---------

### MARKETING DIVISION

269761	269761	Ford Freestar Van	Marketing Develop	2FTZA54626BA39761	2006	Unleaded	G65342
220517	220517	Crown Victoria	Marketing Develop	2FAFP71W33X120517	2002	Unleaded	G53352
220541	220541	Crown Victoria	Marketing Develop	2FAFP71W03X120541	2002	Unleaded	G53357

### ATC

284640	284640	Ford Escape	Bruce Rizzieri	1FMCU49H38KA04640	2007	Unleaded	G68870
--------	--------	-------------	----------------	-------------------	------	----------	--------

### OPERATIONS DIVISION

#### Yale

269762	269762	Ford Freestar Van	Annette Paez	2FTZA54626BA39762	2006	Unleaded	G65247
<del>5002</del>	<del>500000</del>	<del>Honda Civic GX</del>	<del>Oper. Supervisors</del>	<del>1HGFN4014XL000000</del>	<del>1999</del>	<del>CNG</del>	<del>G42880</del>
200350	200350	Malibu	Oper. Supervisors	1GBJC34J3YF485053	2000	Unleaded	G82693
981894	981894	Ford Taurus 4-dr.	Oper. Supervisors	1FAPP52U8WA141894	1998	Unleaded	G32968
207116	207116	Crown Victoria	Oper. Supervisors	2FAFP71W9YX107116	2000	Unleaded	G46201
O13058	O13058	Malibu	Oper. Supervisors	1G1ND52J316213058	2001	Unleaded	G81210
<del>5000</del>	<del>500001</del>	<del>Honda Civic GX</del>	<del>Oper. Supervisors</del>	<del>1HGFN4014XL000001</del>	<del>1999</del>	<del>CNG</del>	<del>G42820</del>
<del>5506</del>	<del>995306</del>	<del>Honda Civic GX</del>	<del>Oper. Supervisors</del>	<del>1HGFN4014XL000001</del>	<del>1999</del>	<del>CNG</del>	<del>G42820</del>
2625	2625	Ford E-350	Oper. Shuttle	1FDWE35P86HB30035	2006	Diesel	G66700
981895	981895	Ford Taurus	Oper. Supervisors	1FAPP52UXWA141895	1998	Unleaded	G32969
230549	230549	Crown Victoria	Oper. Supervisors	2FAFP71W53X120549	2003	Unleaded	G51103
228517	228517	Crown Victoria	Oper. Supervisors	2FAFP71W72X138517	2002	Unleaded	G50987
203697	203697	Crown Victoria	Oper. Supervisors	2FAP71W9YX203697	2000	Unleaded	G46329
2613	2613	Ford E-350	Oper. Shuttle	1FDWE35P16HB20057	2006	Diesel	G66699
992583	992583	DODGE CARAVAN	Oper. Supervisors	2B4GP25G3XR412583	1999	Unleaded	G41454

# APPENDIX B: FLEET INVENTORY

## FLEET INVENTORY - NON-REVENUE VEHICLES

### Daytona

981893	981893	Ford Taurus	Oper. Supervisors	1FAFP52U6WA141893	1998	Unleaded	G32967
993442	993442	Taurus	Oper. Supervisors	1FAFP52U4WG153442	1998	Unleaded	G41114
983453	983453	Taurus	Oper. Supervisors	1FAFP52U9WG153453	1998	Unleaded	G46911
O30552	O30552	Crown Victoria	Oper. Supervisors	2FAFP71W53X120552	2003	Unleaded	G54076
206919	206919	Crown Victoria	Oper. Supervisors	2FAFP71W5YX206919	2000	Unleaded E-85	G46220
269763	269763	Ford Freestar Van	Oper. Supervisors	2FTZA54626BA39763	2006	Unleaded	G65344
O10338	O10338	Malibu	Oper. Supervisors	1G1ND52JXY6330338	2000	Unleaded	G82160
991099	991099	Crown Victoria	Oper. Supervisors	2FAFP71W5XX241099	1999	Unleaded	G41922
230528	230528	Crown Victoria	Oper. Supervisors	2FAFP71W83X120528	2003	Unleaded	G51098
2604	2604	Ford E-350	Oper. Shuttle	1FDWE35P16HB20060	2006	Diesel	G66328
O30838	O30838	Crown Victoria	Oper. Supervisors	2FAFP71W83X150838	2000	Unleaded	G54521
214569	214569	Malibu	Oper. Supervisors	1G1ND52J016214569	2001	Unleaded	G46654
217397	217397	Malibu	Oper. Supervisors	1G1ND52J016217397	2001	Unleaded	G46698

## MAINTENANCE DIVISION

### Yale

864989	864989	Toyota Forklift	Maintenance	02-3FD33 / 14989	1986	Diesel	N/A
874601	874601	Chevy Bus Tow Trk	R/C Truck Maint.	1GBM7D1G2HV101026	1987	Diesel E-85	G19892
253000	253000	Chevy Colo. Trk.	Svc. Truck Maint.	1GCCS148168143000	2005	Unleaded	G64091
987949	987949	Dodge 1/2 Ton Trk	Svc. Truck Maint.	3B7KC26Z6WM247949	1998	Unleaded	G79076
297392	297392	Chevy Impala	Tom Martinez	2G1WS57MX91267392	2009	Unleaded	G76495

### Daytona

944850	944850	Ford Bronco XL 4x4		3FMEU15H6RLB54850	1994	Unleaded	G62881
243143	243143	DODGE DURANGO	James Bird	1D4HB48D64F193143	2004	Unleaded E-85	G59185
251635	251635	Chevy Colo. Trk.	Svc. Truck Maint.	1GCCS148168141635	2005	Unleaded	G64089
208237	208237	Chevy Impala	Maint. Admin	2G1WF55K1Y9278237	2000	Unleaded	G-44231
987950	987950	Dodge 1/2 Ton Trk	Svc. Truck Maint.	3B7KC26Z2WM247950	1998	Unleaded	G79077
977538	977538	Chevy Tahoe 1500	ET truck	3GNEK18R5VG127538	1997	Unleaded	G62884

### Parts

258773	258773	Chevy Impala	Randy Jiron	2G1WF52K259328773	2005	Unleaded	G61816
978039	978039	Ford Ranger	Parts Truck	1FTCR10U0VPB52404	1997	Unleaded	G33999

## **APPENDIX B: FLEET INVENTORY**

---

**THIS PAGE LEFT INTENTIONALLY BLANK**







## APPENDIX C: COMPONENT DATA

The Component Rebuild Analysis shown on the next pages shows the components rebuilt at each facility each year since 2012. The amount of rebuild time per year is shown by facility and for the entire system based on the average rebuild time shown. This analysis suggests that the Component Rebuild should be located at one facility. It is recommended that Component Rebuild be located at the Daytona Facility due to its layout and state-of-the-art shop equipment.

The table below shows the number of engines and transmissions currently stored at each facility. Given the lack of space on the Yale Facility site and the recommendation that Component Rebuild be located at the Daytona Facility, it would be appropriate for all engines and transmissions to be stored at Daytona.

<b>Engine/Transmission Storage</b>	Daytona	Yale
Engine Caterpillar Diesel C9 Core	3	
Engine Chevrolet 5.3 Gas Core	1	
Engine Chevrolet w/Transmission Core V6		1
Engine Cummins 280 ISL Diesel Core	2	
Engine Cummins 280 ISL Diesel New		2
Engine Cummins 280 ISL Diesel Rebuilt	2	1
Engine Cummins L10 Core		2
Engine Cummins L10 Rebuilt		1
Engine Ford 6.0 Diesel Core	2	
Engine Ford V10 Gas New	1	
<b>TOTAL ENGINES</b>	<b>11</b>	<b>7</b>
Transmission Allison B400 Core		4
Transmission Allison B400 New		2
Transmission Allison EV40 Core	3	
Transmission Chervrolet 700R Core	1	
Transmission Ford 5R110 Core	2	
<b>TOTAL TRANSMISSIONS</b>	<b>6</b>	<b>6</b>

# APPENDIX C: COMPONENT DATA

## COMPONENT REBUILD ANALYSIS

		DAYTONA				YALE			
<b>Current Fleet</b>		52 Diesel/Hybrid 40' Fixed Route 24 Diesel/Hybrid 60' Fixed Route 69 Gasoline Paratransit (22' to 26')				37 Diesel/Hybrid 40' Fixed Route 41 CNG 40' Fixed Route			
<b>Avg. Rebuild Time (hrs)</b>		Daytona				Yale			
		2012	2013	2014	2015	2012	2013	2014	2015
Engine Caterpillar C9 Diesel	50	1							
Engine Cradle 300	12					1			
Engine Cradle Neo 300 Rebuilt	12					6			
Engine Cummins 280 ISL Diesel	50	4	2	2	1	2		2	1
Engine Cummins 5.9	45						1		
Engine Cummins L10	50					7	2		
Engine Ford 6.0 Diesel	35	1	7	8	2				
<b>TOTAL ENGINES</b>		<b>6</b>	<b>9</b>	<b>10</b>	<b>3</b>	<b>15</b>	<b>4</b>	<b>2</b>	<b>1</b>
<b>Subtotal Annual Rebuild Time (hours)</b>		<b>285</b>	<b>345</b>	<b>380</b>	<b>120</b>	<b>522</b>	<b>157</b>	<b>100</b>	<b>50</b>
Transmission Allison B400	16					7	1		
Transmission Allison EV40	16	1	5	12	1				
Transmission Chevrolet Malibu 4T40E	12			1					
Transmission Ford 5R110	12	8	6	10	2				
Transmission Ford BRM	12	1							
<b>TOTAL TRANSMISSIONS</b>		<b>10</b>	<b>11</b>	<b>23</b>	<b>3</b>	<b>7</b>	<b>1</b>		
<b>Subtotal Annual Rebuild Time (hours)</b>		<b>124</b>	<b>152</b>	<b>324</b>	<b>40</b>	<b>112</b>	<b>16</b>	<b>0</b>	<b>0</b>
Accumulator 300	4					8	4		
Accumulator Neo 300	4								
Axle Assembly Rear	16	2	1						
Bracket Seat Artic	4		9						
Bumper Rear 2800	4			6					
Chamber Brake Center	2		6	5	3				
Chamber Brake Front	1	6	7	3					
Chamber Brake Rear	3	13	36	30	2				
Controller Wheel Chair Lift	3		4						
Driveline 6400-6600 Short	6			1					
Driveline 700 Long	6			3					
Driveline Long 700	6	1	4						
Driveline Short 6400-6600	6	3	2						
Dryer Air 300	3					34	30	31	
Dryer Air 400	3					8	3	3	
Dryer Air Long AD9	3	86	129	3					
Fan Drive Neo	4						3		
Fan Drive Neo 300	4					10		2	
Generator Neo 24V 50DN	6					1	3	1	
Guard Belt 300	2						1		
ProHeat NF	4	14	9	6					
Rod Radius lower	2	5	7	6					
Shaft Driveline 300	6						3	3	1
Shaft Driveline Neo 300	6					5			
Wheel Hub Assembly 300	3					12	9	10	
<b>TOTAL MINOR COMPONENTS</b>		<b>130</b>	<b>214</b>	<b>63</b>	<b>5</b>	<b>78</b>	<b>56</b>	<b>50</b>	<b>1</b>
<b>Subtotal Annual Rebuild Time (hours)</b>		<b>425</b>	<b>664</b>	<b>196</b>	<b>12</b>	<b>270</b>	<b>192</b>	<b>164</b>	<b>6</b>
<b>TOTAL ANNUAL REBUILD TIME BY FACILITY (hours)</b>		<b>834</b>	<b>1,161</b>	<b>900</b>	<b>172</b>	<b>904</b>	<b>365</b>	<b>264</b>	<b>56</b>
<b>TOTAL REBUILD TIME FOR AGENCY (hours)</b>		<b>1,738</b>	<b>1,526</b>	<b>1,164</b>	<b>228</b>				





# APPENDIX D: FLEET PROJECTIONS

ABQ Ride Yale Maintenance Facility Assessment

## Fleet Projections

	2015			2020			2025			2030		
	Yale	Daytona	Total	Yale	Daytona	Total	Yale	Daytona	Total	Yale	Daytona	Total
<b>Fixed Route (40')</b>	<b>78</b>	<b>52</b>	<b>130</b>			<b>140</b>			<b>150</b>			<b>160</b>
Diesel/Hybrid	37	52	89									
CNG	41	0	41									
<b>Artic/BRT (60')</b>	<b>0</b>	<b>24</b>	<b>24</b>			<b>38</b>			<b>49</b>			<b>60</b>
Diesel/Hybrid	0	24	24			24						
Diesel	0	0	0			14						
<b>Paratransit (Gasoline)</b>	<b>0</b>	<b>69</b>	<b>69</b>			<b>93</b>			<b>116</b>			<b>140</b>
<b>TOTAL REVENUE VEHICLES</b>	<b>78</b>	<b>145</b>	<b>223</b>			<b>271</b>			<b>315</b>			<b>360</b>

The projections shown above are based on discussions with the ABQ Ride Associate Director. Note that the Space Needs Program presented in Chapter 2 is based on the 2030 projections.

## APPENDIX D: FLEET PROJECTIONS

---

THIS PAGE LEFT INTENTIONALLY BLANK







# APPENDIX E: CAPACITY ANALYSIS

ABQ Ride Yale Maintenance Facility Assessment

**Capacity Analysis**

	Yale			Daytona			System Total
	Standard	Artic	Paratransit	Standard	Artic	Paratransit	
<b>General Repair Bays</b>							
General Repair Bays	7	0	0	5	4	2	18
Catwalk Bay	1	0	0	1	1	0	3
Component Exchange	0	0	0	1	1	0	2
Subtotal	8	0	0	7	6	2	23
Buses per Bay Ratio	15	15		15	15	35	
<b>Capacity (General Repair Bays)</b>	<b>120</b>	<b>0</b>	<b>0</b>	<b>105</b>	<b>90</b>	<b>70</b>	<b>385</b>
<b>Specialty Bays (one each per facility)</b>							
Tire Bay	1	0	0	0	1	0	2
Alignment Bay	1	0	0	0	1	0	2
Chassis Wash/Steam Clean	1	0	0	0	1	0	2
<b>Capacity (Specialty Bays)</b>	<b>Standard &amp; Paratransit</b>			<b>Standard, Artic, &amp; Paratransit</b>			
<b>Body Repair</b>							
Body Repair Bay	1	0	0	0	2	0	3
Paint Prep / Body Repair Bay	1	0	0	0	1	0	2
Subtotal	2	0	0	0	3	0	5
Buses per Bay Ratio (75 to 100)	75	75	75	75	75	75	
<b>Capacity (Body Repair)</b>	<b>150</b>	<b>0</b>	<b>0</b>	<b>0</b>	<b>225</b>	<b>0</b>	<b>375</b>
<b>Paint Booth</b>							
	1	0	0	0	1	0	2
Buses per Booth Ratio	200	200	200	200	200	200	
<b>Capacity (Paint Booth)</b>	<b>200</b>	<b>0</b>	<b>0</b>	<b>0</b>	<b>200</b>	<b>0</b>	<b>400</b>
<b>Standard &amp; Paratransit</b>			<b>Standard, Artic, &amp; Paratransit</b>				
<b>Fuel Positions</b>							
Diesel / CNG (Hybrid + CNG)	3	0	0	0	0	0	3
Diesel / Gasoline (Hybrid + Paratransit)	0	0	0	0	3	0	3
Gasoline (Paratransit)	0	0	0	0	0	4	4
Subtotal	3	0	0	0	3	4	10
Buses per Position Ratio	75	75	75	75	75	75	
<b>Capacity (Fuel Positions)</b>	<b>225</b>	<b>0</b>	<b>0</b>	<b>0</b>	<b>225</b>	<b>300</b>	<b>750</b>
<b>Bus Washers</b>							
Drive Through (1 per 150 buses)	0	1	0	0	1	1	3
Buses per Washer Ratio	150	150	150	150	150	150	
<b>Capacity (Bus Washers)</b>	<b>0</b>	<b>150</b>	<b>0</b>	<b>0</b>	<b>150</b>	<b>150</b>	<b>450</b>
<b>Standard &amp; Paratransit</b>			<b>Standard, Artic, &amp; Paratransit</b>				
<b>Detail Clean</b>							
	2 outdoor			2 outdoor			

The table above indicates that the Daytona Facility could accommodate the entire existing fleet of 130 fixed route 40' buses, 24 fixed route 60' buses, and 69 paratransit vehicles if CNG fueling was added to the site. This provides ABQ Ride a unique opportunity to upgrade the Yale Facility before the projected fleet expansion beyond the year 2020.

## **APPENDIX E: CAPACITY ANALYSIS**

---

**THIS PAGE LEFT INTENTIONALLY BLANK**





## **EQUIPMENT INVENTORY LIST**

The following is an organized list of the existing equipment inventory at the City of Albuquerque, New Mexico's Yale Maintenance Facility, as well as corresponding photographs of that same equipment, which can be relocated and re-used in any future facility configurations. The equipment inventory list is organized facility location, and the photographs are listed numerically by mark number in accordance with the list.

THIS PAGE LEFT INTENTIONALLY BLANK



**PRELIMINARY EQUIPMENT INVENTORY**  
**ABQ RIDE YALE FACILITY**

March 2015

Mark	Description	Price	Qty	Ext	Area	Manufacturer	Model #	Remarks
<b><u>BAY 1 - GENERAL MAINTENANCE</u></b>								
11401	Cabinet, flammable material, wall mounted	Bay 1	1	xxxx				
14561	Rack, bulk	Bay 1	1	xxxx				
18601	Workbench, steel top, 5" vise	Bay 1	1	xxxx				
20851	Buffer / grinder, pedestal mounted	Bay 1	1	xxxx				
50301	Cart, parts, fabricated	Bay 1	1	xxxx				
56941	Lift, portable	Bay 1	4	xxxx		Stertil Koni		
87601	Overhead reel, set of 2 (CG, GO)	Bay 1	1	xxxx				
99991	Tool box	Bay 1	2	xxxx				
<b><u>BAY 2 - GENERAL MAINTENANCE</u></b>								
11301	Cabinet, computer	Bay 2	1	xxxx				
18601	Workbench, steel top, 5" vise	Bay 2	1	xxxx				
21401	Charger, battery, portable	Bay 2	1	xxxx				
35601	Tank, parts cleaning	Bay 2	1	xxxx		Safety Kleen		
50306	Cart, parts	Bay 2	2	xxxx				
51301	Dolly, dual wheel	Bay 2	1	xxxx				
55401	Jack, transmission	Bay 2	1	xxxx				
56942	Lift, portable	Bay 2	4	xxxx				
58951	Stand, safety	Bay 2	1	xxxx				
87201	Overhead reel, set of 2 (CG, GO)	Bay 2	1	xxxx				
87601	Overhead reel, set of 6 (ATF, CA, EO1, EO2, GO, H2O)	Bay 2	1	xxxx				
99992	Tool box	Bay 2	1	xxxx				
<b><u>BAY 3 - GENERAL MAINTENANCE</u></b>								
13001	Ladder, rolling, 10 step	Bay 3	1	xxxx				
20852	Buffer / grinder, 6", pedestal mounted	Bay 3	1	xxxx				
24801	Packer, bearing, portable	Bay 3	1	xxxx				
50307	Cart, parts	Bay 3	1	xxxx				
53121	Dolly, dual wheel, high rise	Bay 3	1	xxxx				
57031	Lift, drive-on, parallelogram, 50,000 lb, surface mounted	Bay 3	1	xxxx		Rotary	Advantage Lift	
99993	Tool box	Bay 3	1	xxxx				
99994	Tool box	Bay 3	1	xxxx				
<b><u>BAY 4 - GENERAL MAINTENANCE</u></b>								
18602	Workbench, steel top, 5" vise	Bay 4	1	xxxx				
35602	Tank, parts cleaning	Bay 4	1	xxxx		Safety Kleen		
57032	Lift, drive-on, parallelogram, 50,000 lb, surface mounted	Bay 4	1	xxxx		Rotary	Advantage Lift	
87202	Overhead reel, set of 2 (CG, GO)	Bay 4	1	xxxx				
<b><u>BAY 5 - GENERAL MAINTENANCE</u></b>								
11305	Cabinet, computer	Bay 5	1	xxxx				
18603	Workbench, steel top, 5" vise	Bay 5	1	xxxx				

**PRELIMINARY EQUIPMENT INVENTORY**  
**ABQ RIDE YALE FACILITY**

March 2015

Mark	Description	Price	Qty	Ext	Area	Manufacturer	Model #	Remarks
50308	Cart, parts	Bay 5	1	xxxx				
50411	Cart, tool	Bay 5	1	xxxx				
57034	Lift, drive-on, parallelogram, 50,000 lb, flush mounted	Bay 5	1	xxxx		Rotary	Advantage Lift	
87602	Overhead reel, set of 6 (ATF, CA, EO1, EO2, GO, H2O)	Bay 5	1	xxxx				
99995	Tool box	Bay 5	3	xxxx				
99996	Tool box, large	Bay 5	3	xxxx				
<b><u>PARTS ROOM</u></b>								
11131	Cabinet, 12 drawer	Parts Room	6	xxxx	59"			
11132	Cabinet, 10 drawer	Parts Room	5	xxxx				
11133	Cabinet, 5 drawer	Parts Room	3	xxxx				
11134	Cabinet, 6 drawer	Parts Room	2	xxxx				
11401	Cabinet, flammable material	Parts Room	2	xxxx				
11402	Cabinet, flammable material, 45 gallon	Parts Room	2	xxxx				
11901	Cabinet, storage, 2 door	Parts Room	3	xxxx				
14321	Rack, belt, wall mounted	Parts Room	1	xxxx				
14562	Rack, bulk	Parts Room	4	xxxx	6'x3'			
14563	Rack, bulk, fabricated	Parts Room	1	xxxx	8'			
16801	Shelving unit, 18"	Parts Room	1	xxxx				
16802	Shelving unit, 24"	Parts Room	1	xxxx				
16803	Shelving unit, 12"	Parts Room	1	xxxx				
16804	Shelving unit, 18"	Parts Room	1	xxxx	4'x18"			
26251	Vacuum, wet/dry	Parts Room	1	xxxx				
26402	Cart, refrigerant service	Parts Room	1	xxxx		RTI	RHS 780	
26403	Cart, refrigerant reclaim	Parts Room	1	xxxx				
26404	Cart, refrigerant service	Parts Room	2	xxxx				
29001	Welder, wire feed	Parts Room	1	xxxx		Hobar		
50309	Cart, parts	Parts Room	1	xxxx				
50352	Cart, a-frame	Parts Room	2	xxxx				
53102	Dolly, drum, 2 wheel	Parts Room	1	xxxx				
55001	Jack, floor	Parts Room	1	xxxx				Broken
98001	Scale, portable	Parts Room	1	xxxx				
<b><u>PARTS MEZZANINE</u></b>								
11135	Cabinet, 12 drawer	Parts Mezz	1	xxxx				
14564	Rack, bulk	Parts Mezz	39	xxxx	6'x3'			
15041	Rack, glass, portable	Parts Mezz	1	xxxx				
50791	Monorail, 1/2 ton	Parts Mezz	1	xxxx		Coffing		
<b><u>UNIT SHOP</u></b>								
11136	Cabinet, 9 drawer	Unit Shop	1	xxxx	59"			
11137	Cabinet, 12 drawer	Unit Shop	1	xxxx	59"			
14571	Rack, expanded metal, 5 shelf	Unit Shop	1	xxxx	6'x2'			
16111	Rack, wire hose	Unit Shop	1	xxxx				

**PRELIMINARY EQUIPMENT INVENTORY**  
**ABQ RIDE YALE FACILITY**

March 2015

Mark	Description	Price	Qty	Ext	Area	Manufacturer	Model #	Remarks
18604	Workbench, steel top, 6" vise	Unit Shop	3	xxxx				
18605	Workbench, steel top, 2 pedestals	Unit Shop	2	xxxx				
18661	Workbench, steel top, portable	Unit Shop	1	xxxx				
20853	Buffer / grinder, 6"	Unit Shop	1	xxxx				
22151	Drill press, 20", floor mounted	Unit Shop	1	xxxx				
22441	Dust collector	Unit Shop	1	xxxx				
23501	Lathe, brake	Unit Shop	1	xxxx		Ammco		
23501	Lathe, brake	Unit Shop	1	xxxx		Star		
23701	Lathe	Unit Shop	1	xxxx				
24621	Oven	Unit Shop	1	xxxx				
25321	Press, hydraulic, 25 ton	Unit Shop	1	xxxx				
25322	Press, hydraulic, 60 ton, with arbor press	Unit Shop	1	xxxx		Dake		
26252	Vacuum, shop	Unit Shop	1	xxxx				
29201	Welder, oxyacetylene	Unit Shop	2	xxxx				
30801	Cabinet, abrasive blast	Unit Shop	1	xxxx		Zero		
35603	Tank, parts cleaning	Unit Shop	1	xxxx		Safety Kleen		
37831	Cabinet, jet spray	Unit Shop	1	xxxx				
37851	Cabinet, jet spray, small	Unit Shop	1	xxxx				
50201	Cart, oxyacetylene bottle, 2 wheel	Unit Shop	1	xxxx				
50301	Cart, parts	Unit Shop	1	xxxx				
50353	Cart, 3 tier, fabricated	Unit Shop	1	xxxx				
50421	Cart, transmission	Unit Shop	1	xxxx				
52801	Crane, portable, 2 ton	Unit Shop	1	xxxx				
57801	Stand, transmission, fixed	Unit Shop	1	xxxx				
57802	Stand, engine, portable	Unit Shop	1	xxxx				
99997	Tool box	Unit Shop	2	xxxx				

**BAY 6 - TIRE BAY**

11902	Cabinet, shop storage	Bay 6	1	xxxx				
16351	Rack, tire, 2 tier (exterior)	Bay 6 ext	2	xxxx				Outside of Bay 6
21101	Cage, inflation	Bay 6	1	xxxx				
21501	Compressor, air, reciprocating	Bay 6	1	xxxx			7.5 hp	
24401	Mounter / demounter, truck	Bay 6	1	xxxx		Coats	HIT 5000	
24402	Mounter / demounter	Bay 6	1	xxxx		Coats	5060AX	
49101	Wheel balancer, automotive	Bay 6	1	xxxx		Coats		1050
49121	Wheel balancer, heavy duty	Bay 6	1	xxxx		Coats		6450
53151	Lift, tire (????)	Bay 6	1	xxxx		Coats		575
55002	Jack, floor, 3 ton	Bay 6	2	xxxx				
99998	Tool box	Bay 6	1	xxxx				

**BAY 7 -**

18606	Workbench, steel top, 5" vise	Bay 7	1	xxxx				
20854	Buffer / grinder, 6"	Bay 7	1	xxxx				
35604	Tank, parts cleaning	Bay 7	1	xxxx		Safety Kleen		

**PRELIMINARY EQUIPMENT INVENTORY**

**ABQ RIDE YALE FACILITY**

**March 2015**

Mark	Description	Price	Qty	Ext	Area	Manufacturer	Model #	Remarks
50302	Cart, parts	Bay 7	1	xxxx				
53122	Dolly, dual wheel, high lift	Bay 7	2	xxxx				
57035	Lift, drive-on, parallelogram, 50,000 lb, surface mounted	Bay 7	1	xxxx		Rotary	Advantage Lift	
87011	Overhead reel (EO2)	Bay 7	1	xxxx				
87012	Overhead reel (EO3)	Bay 7	1	xxxx				
87203	Overhead reel, set of 2 (CG, GO)	Bay 7	1	xxxx				
87603	Overhead reel, set of 6 (ATF, CA, EO1, EO2, GO, H2O)	Bay 7	1	xxxx				
<b><u>BAY 8 - ALIGNMENT BAY</u></b>								
11302	Cabinet, computer	Bay 8	1	xxxx				
18607	Workbench, steel top	Bay 8	1	xxxx				
20131	Alignment system	Bay 8	1	xxxx		John Beam	Josam	
21402	Charger, battery	Bay 8	1	xxxx				
<b><u>BAY 9 - CATWALK</u></b>								
10601	Bin, nut / bolt	Bay 9	1					
11303	Cabinet, computer	Bay 9	1	xxxx				
41801	Analyzer, engine, portable	Bay 9	1	xxxx				
51302	Crane, jib, 1/2 ton, electric chain hoist	Bay 9	1	xxxx				
62421	Catwalk	Bay 9	1	xxxx				
<b><u>BAY 10 - BODY REPAIR</u></b>								
11138	Cabinet, 5 drawer	Bay 10	1	xxxx				
11139	Cabinet, drawer	Bay 10	2	xxxx				
11304	Cabinet, computer	Bay 10	2	xxxx				
11903	Cabinet, shop storage	Bay 10	5	xxxx				
11904	Cabinet, shop storage, short	Bay 10	2	xxxx				
12201	Desk, shop, standup	Bay 10	1	xxxx				
14581	Rack, color mixing	Bay 10	1	xxxx				
18608	Workbench steeltop, with drawers	Bay 10	1	xxxx				
55003	Jack, floor, hydraulic	Bay 10	1	xxxx				
66701	Shaker, paint, 1 gallon	Bay 10	1	xxxx				
87701	Light, portable	Bay 10	1	xxxx				
99910	Tool box	Bay 10	2	xxxx				
99911	Tool box, short	Bay 10	1	xxxx				
99999	Tool box, large	Bay 10	1	xxxx				
<b><u>BAY 11A - PAINT BOOTH</u></b>								
61081	Paint booth, cross draft	Bay 11A	1	xxxx				
<b><u>BAY 11B - PAINT PREP</u></b>								
11905	Cabinet, storage, short	Bay 11B	1	xxxx				
14201	Rack, arm, single face	Bay 11B	1	xxxx				
14591	Rack, roll, dispenser	Bay 11B	1	xxxx				

**PRELIMINARY EQUIPMENT INVENTORY**

ABQ RIDE YALE FACILITY

March 2015

Mark	Description	Price	Qty	Ext	Area	Manufacturer	Model #	Remarks
18609	Workbench, steel top, 5" vise	Bay 11B	1	xxxx				
20856	Buffer / grinder 6"	Bay 11B	1	xxxx				
21801	Dispenser, paper, portable	Bay 11B	1	xxxx				
22051	Drill press, bench mounted	Bay 11B	1	xxxx				
50303	Cart, parts	Bay 11B	1	xxxx				
87702	Light, portable	Bay 11B	1	xxxx				
<b>BAY 12</b>								
15042	Rack, glass, portable	Bay 12	1	xxxx				
21502	Compressor, reciprocating, 5 hp	Bay 12	1	xxxx				
23551	Lathe, brake, automotive	Bay 12	1	xxxx		Star	Transmatic	
25333	Press, hydraulic, 100 ton, with arbor press (usable???)	Bay 12	1	xxxx				
50304	Cart, parts	Bay 12	2	xxxx				
50351	Cart, a frame, brake lathe	Bay 12	1	xxxx				
50354	Cart, glass, portable	Bay 12	2	xxxx				
53103	Dolly, dual wheel	Bay 12	1	xxxx				
53123	Dolly, dual wheel, high lift	Bay 12	1	xxxx				
56943	Lift, portable, 16,000 pound	Bay 12	3	xxxx		Stertil Koni		Out of service
58952	Stand, safety, tall	Bay 12	3	xxxx				
<b>WEDLING SHOP</b>								
17951	Table, steel top, welding, with 5" vise	Welding	1	xxxx				
17952	Table cutting, portable	Welding	1	xxxx				
21001	Buffer / grinder, 10"	Welding	1	xxxx				
22152	Drill press, 20", floor mounted	Welding	1	xxxx				
26961	Saw band, horizontal	Welding	1	xxxx		Wilton		
26962	Saw, chop, cart mounted	Welding	1	xxxx				
28301	Vise, 4", pedestal mounted	Welding	1	xxxx				
29002	Welder, arc, portable	Welding	1	xxxx		Lincoln	Ideal Arc 250	
29003	Welder, MIG	Welding	1	xxxx		Dippak	200	
29004	Welder	Welding	1	xxxx		Miller	Syncrowave 250 DX	
29005	Welder, arc, portable	Welding	1	xxxx		Miller	Trailblazer 250G	
29202	Welder, oxyactlene	Welding	1	xxxx				
50305	Cart, parts	Welding	1	xxxx				
50355	Cart, enerpac	Welding	1	xxxx				
62551	Bending brake, 8'	Welding	1	xxxx				
62552	Finger brake	Welding	1	xxxx				
<b>BATTERY ROOM</b>								
20301	Battery bench, fiberglass grate, fabricated	Battery	2	xxxx				
21251	Battery charger with bus bar	Battery	1	xxxx		Napa		
46701	Tester, battery	Battery	1	xxxx		Ferret		44
46702	Tester, battery load	Battery	1	xxxx		Associated		
98201	Safety shower / eyewash	Battery	1	xxxx				

**PRELIMINARY EQUIPMENT INVENTORY**  
**ABQ RIDE YALE FACILITY**

March 2015

Mark	Description	Price	Qty	Ext	Area	Manufacturer	Model #	Remarks
<b><u>LUBE ROOM</u></b>								
24802	Packer, bearing	Lube	1	xxxx				
85251	Pump, ATF, drum mounted	Lube	1	xxxx				
85341	Pump, CG, drum mounted	Lube	1	xxxx				
85751	Pump, GO, drum mounted	Lube	1	xxxx				
<b><u>TIRE / TOOLBOX STORAGE</u></b>								
11906	Cabinet, shop storage	Tool / Tire	1	xxxx				
26401	Cart, AC service	Tool / Tire	1	xxxx				
99912	Tool box	Tool / Tire	5	xxxx				
<b><u>COMPRESSOR ROOM</u></b>								
21503	Compressor, reciprocating, 25 hp	Comp	1	xxxx				
21504	Compressor, reciprocating, 30 hp	Comp	1	xxxx				
22301	Dryer, refrigerated air	Comp	1	xxxx		Zeks	E250G	
<b><u>EXTERIOR: BAY 1-5 WEST</u></b>								
13002	Ladder, rolling, 3 step	Ext	1	xxxx				
13003	Ladder, rolling, 3 step, safety	Ext	2	xxxx				
<b><u>STEAM BAY</u></b>								
13004	Ladder, rolling, 15 step	Steam	1	xxxx				
21505	Compressor, reciprocating, vertical tank	Steam	1	xxxx		Dayton	1 hp	
37151	Washer, high pressure, portable	Steam	1	xxxx				
37201	Washer, high pressure, hot water, with reel	Steam	1	xxxx		Hotsy		
	Washer, 4 brush, top mounted drag mop, with blower	Steam	1	xxxx				
39011	arch	NS Wash						
39201	Water reclaim (inoperable)	Steam	1	xxxx		NS Wash		Not functional

## **EQUIPMENT PHOTOS**

The following is a photographic catalog of the equipment inventoried by the study team at the Yale Maintenance Facility.

THIS PAGE LEFT INTENTIONALLY BLANK





10601



11131





11132

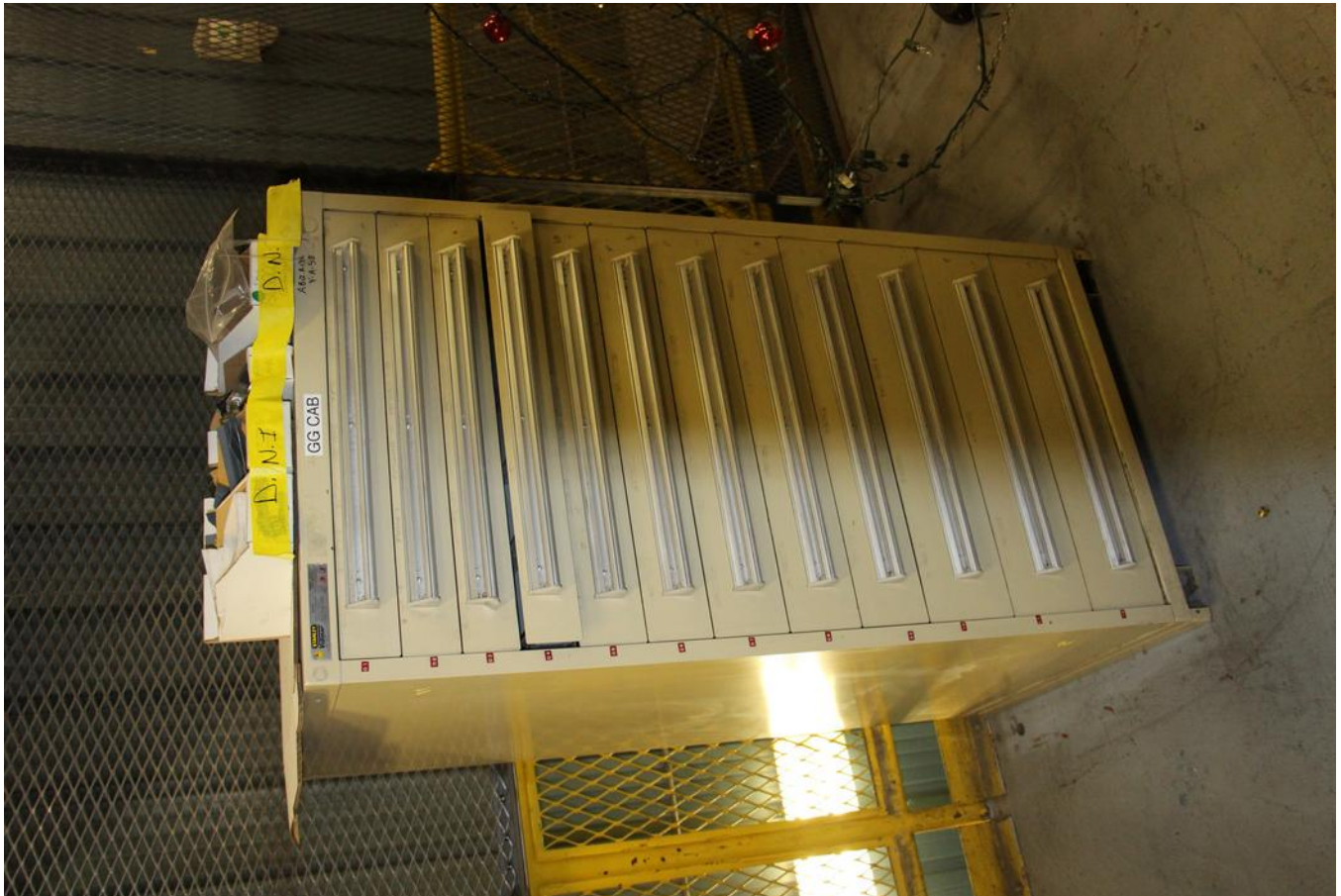


11133





11134



11135





11136



11137





11138



11139



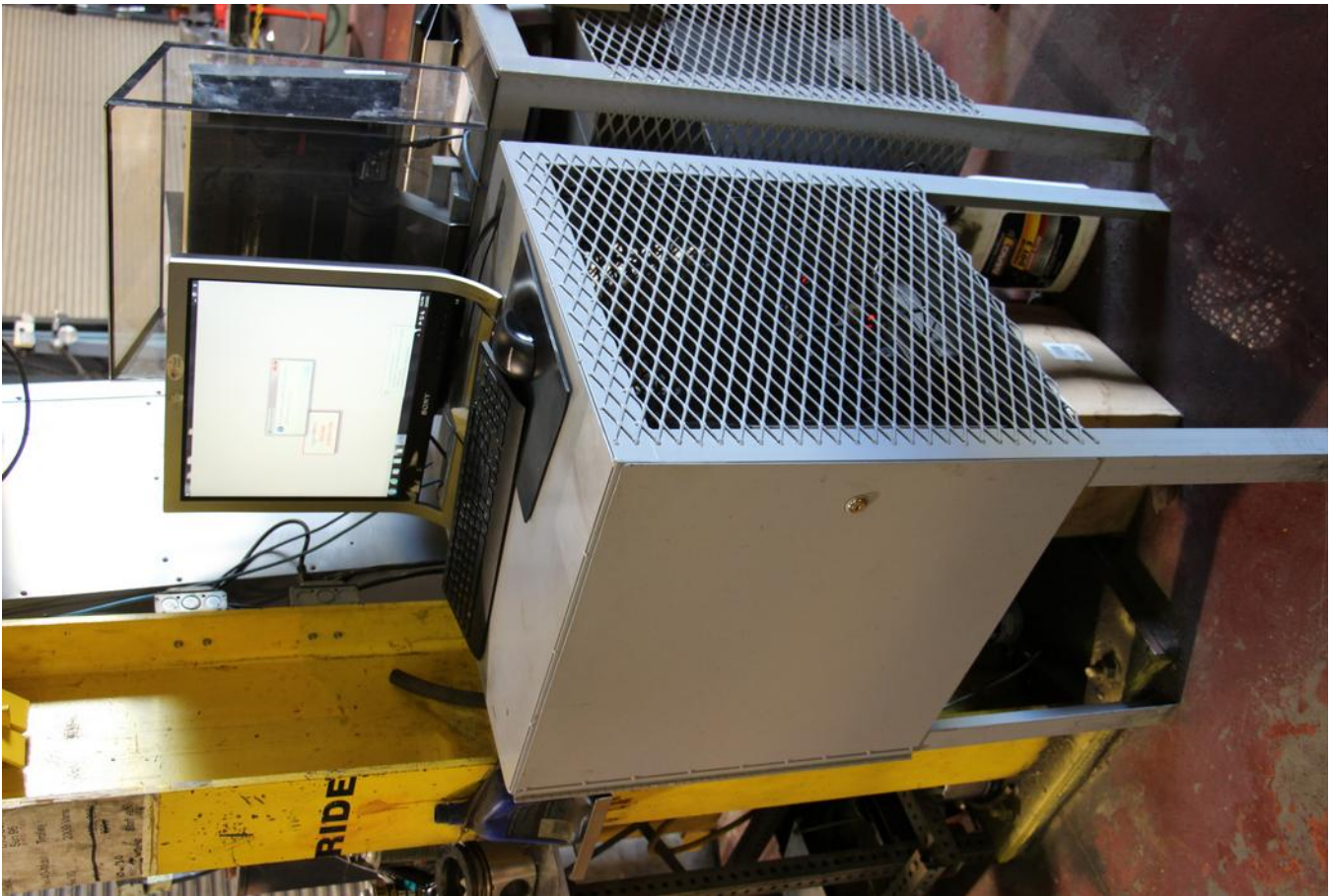


11301



11302





11303



11304





11305



11401





11402



11403



11901

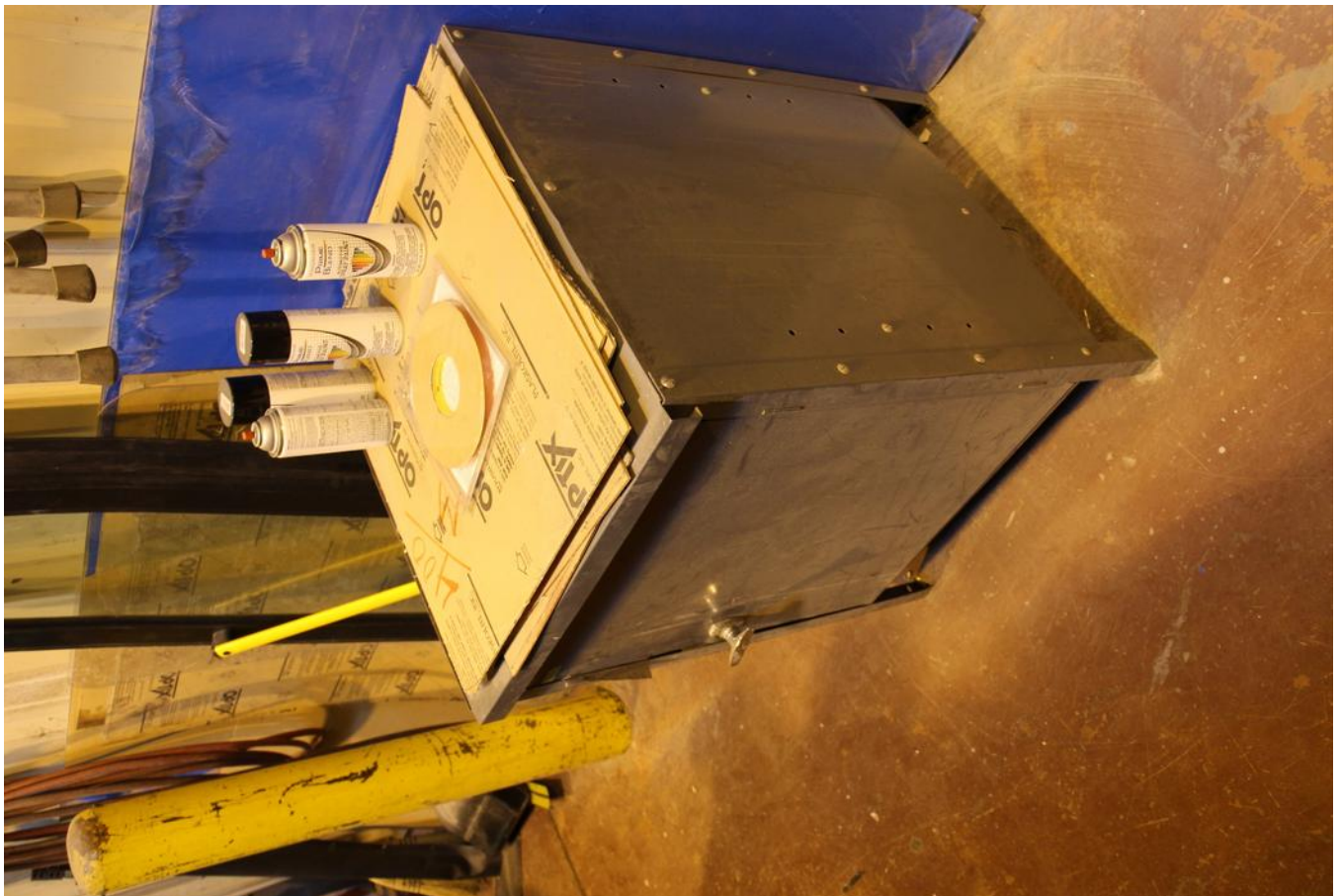


11902





11903



11905



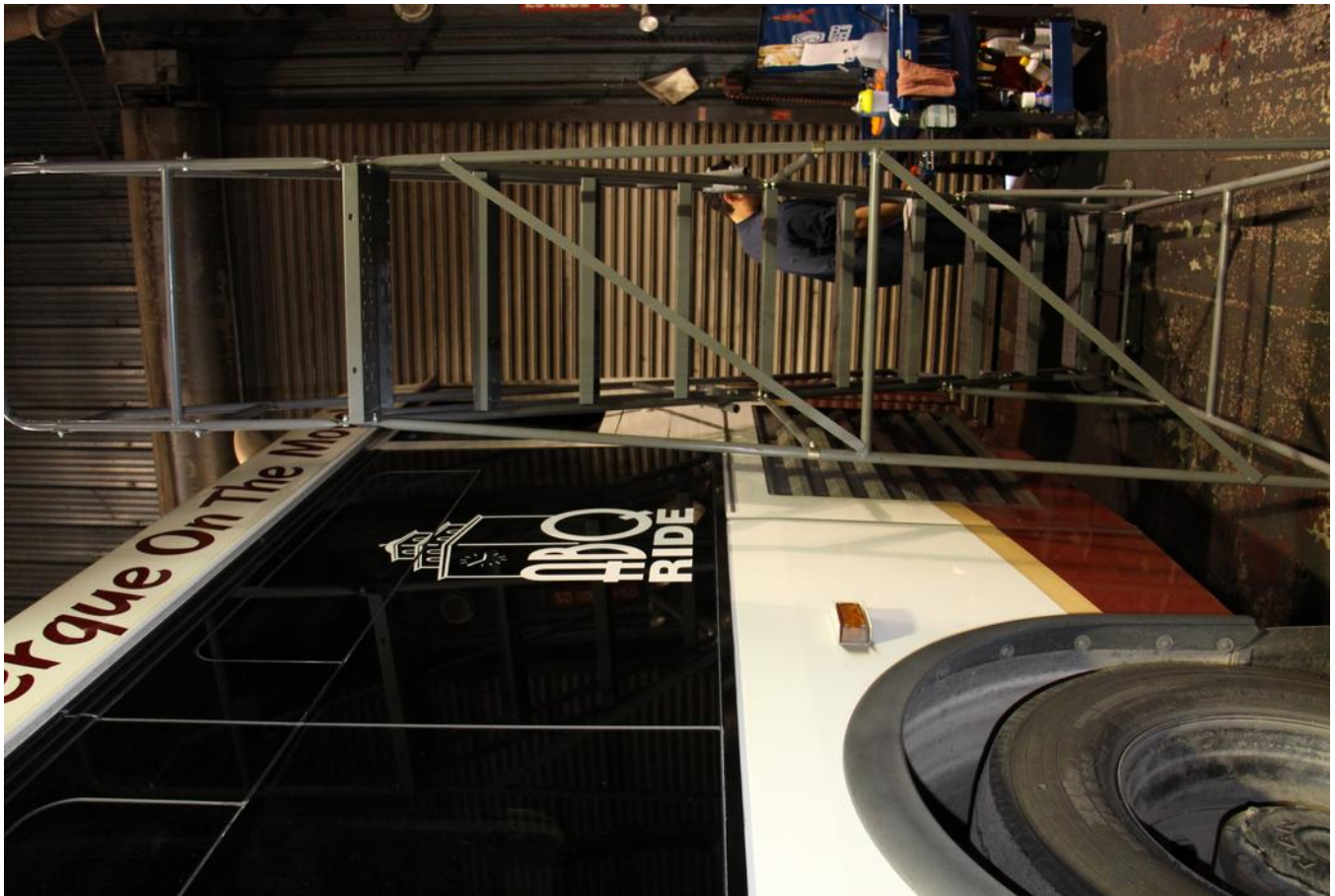


11906



12201





13001

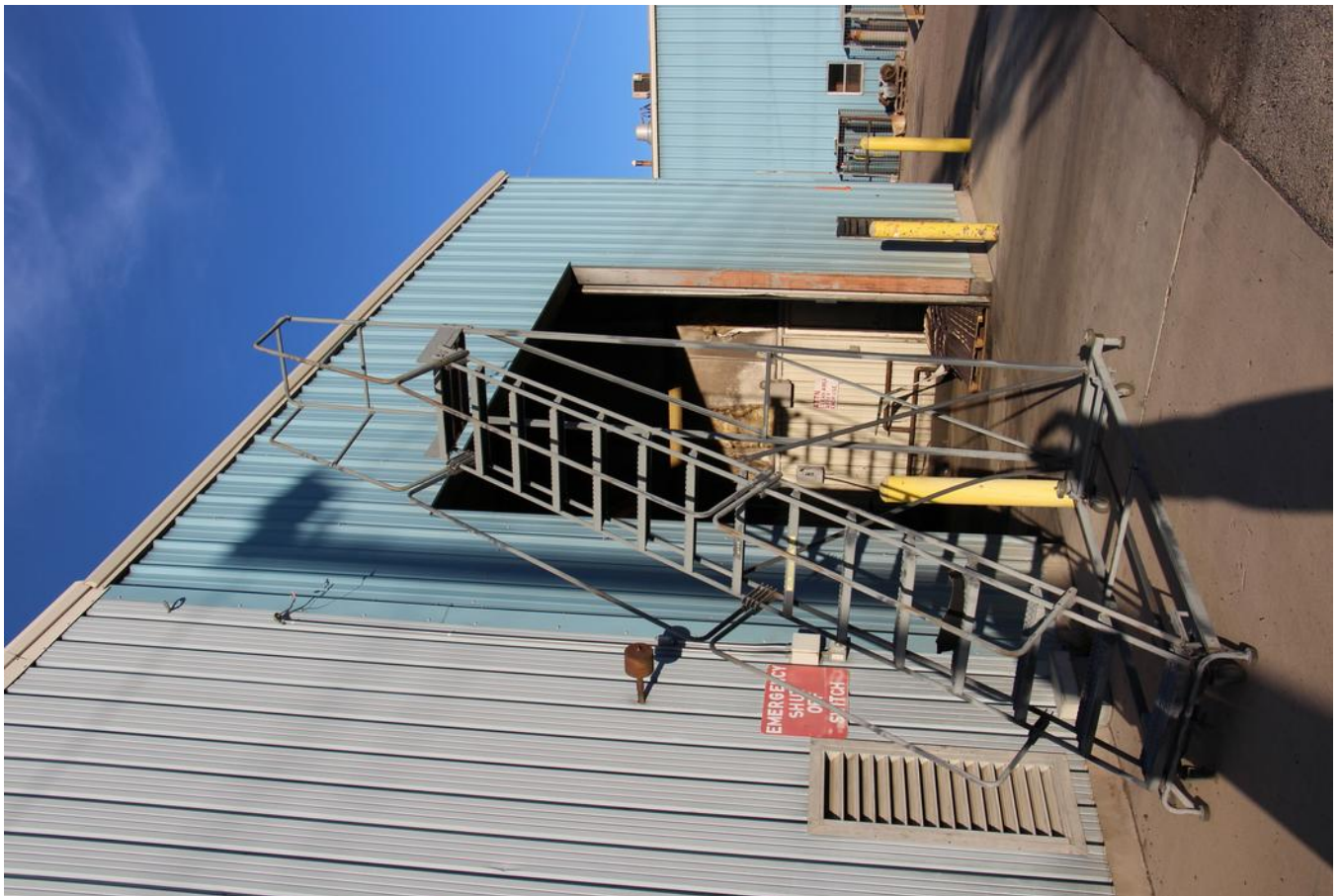


13002



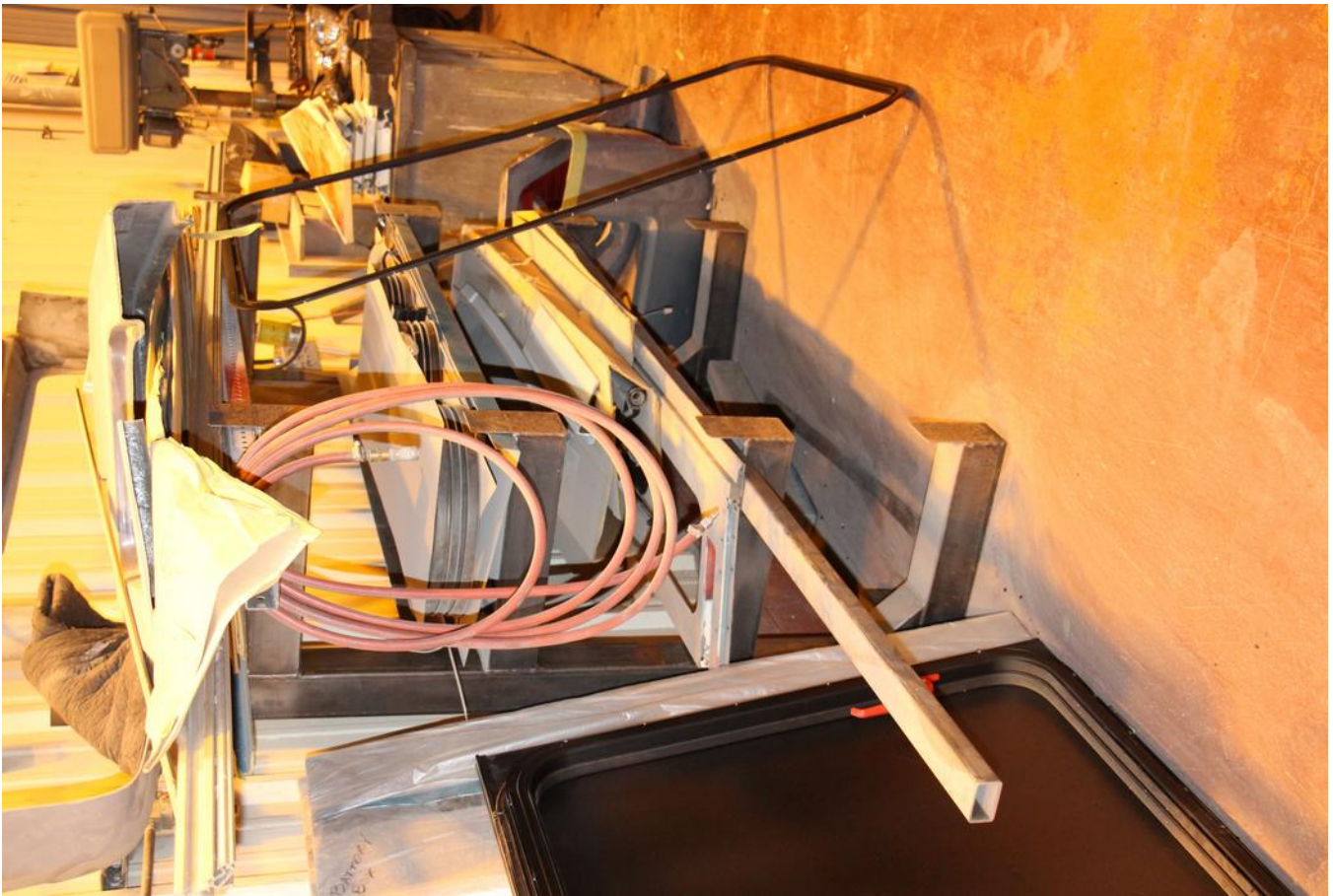


13003



13004





14201



14321





14561



14562





14563



14564





14571



14581





14591



15041





15042

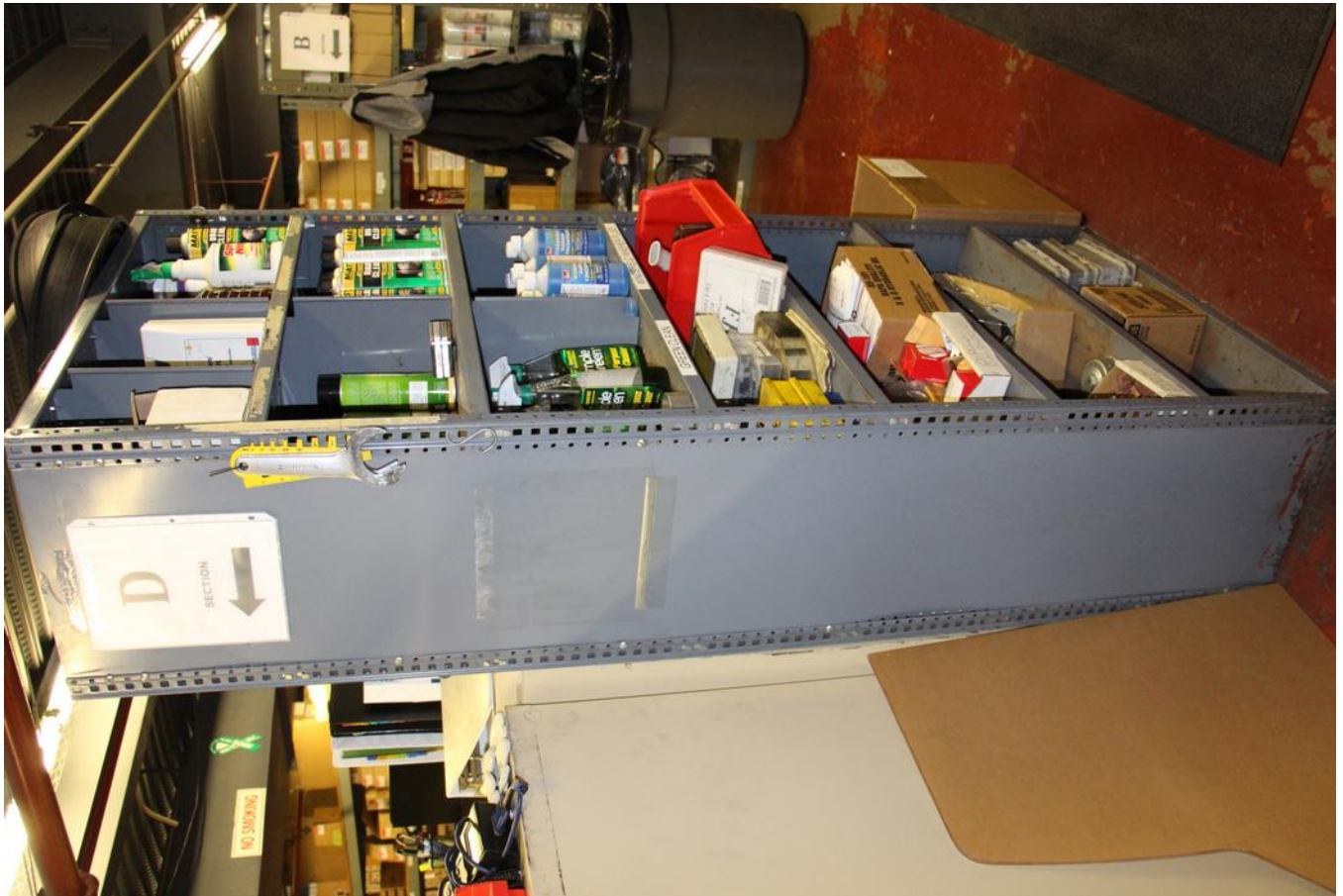


16111





16351



16801





16802



16803





16804



17951





17952



18601





18601x



18602



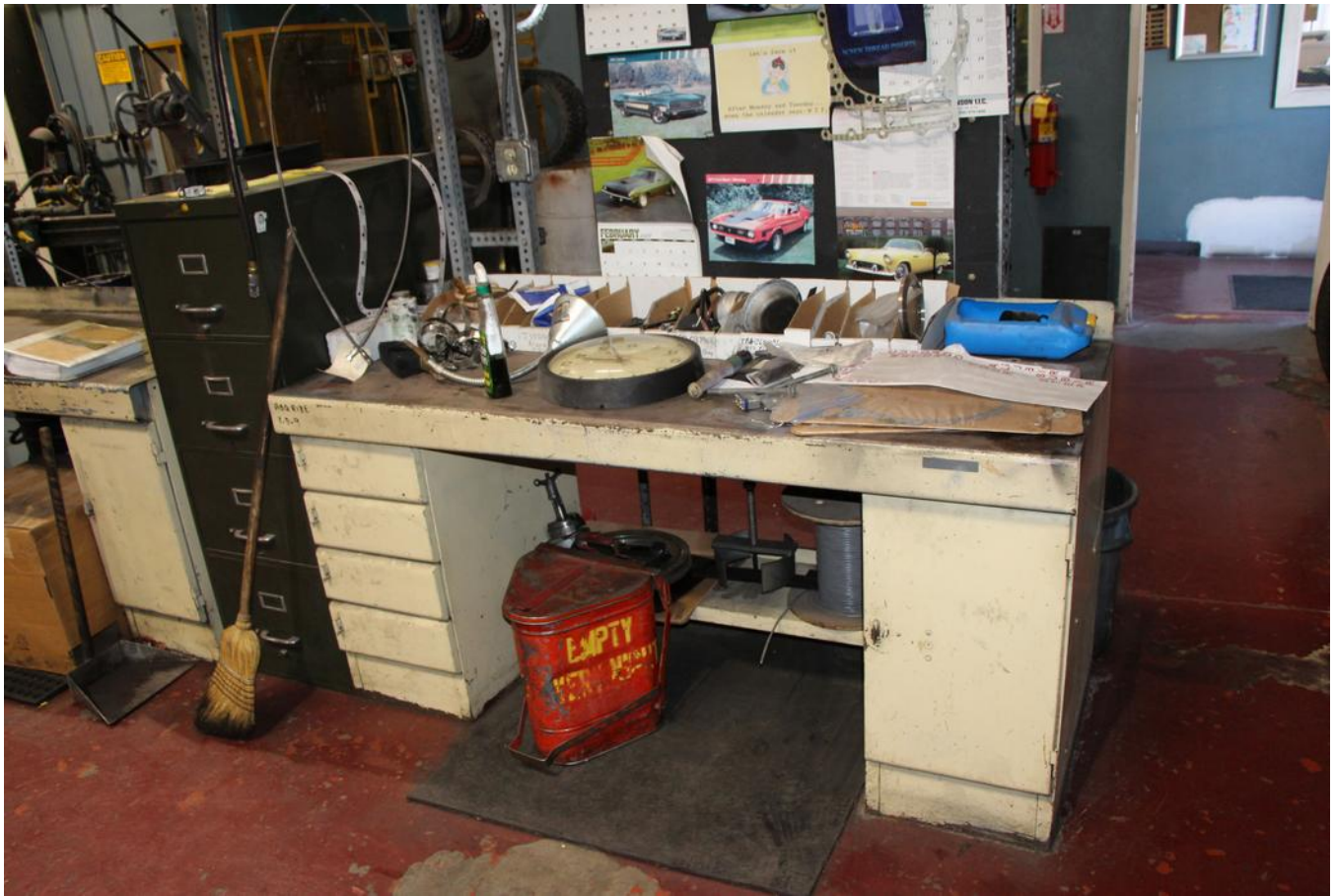


18603



18604





18605



18606





18607



18608





18609

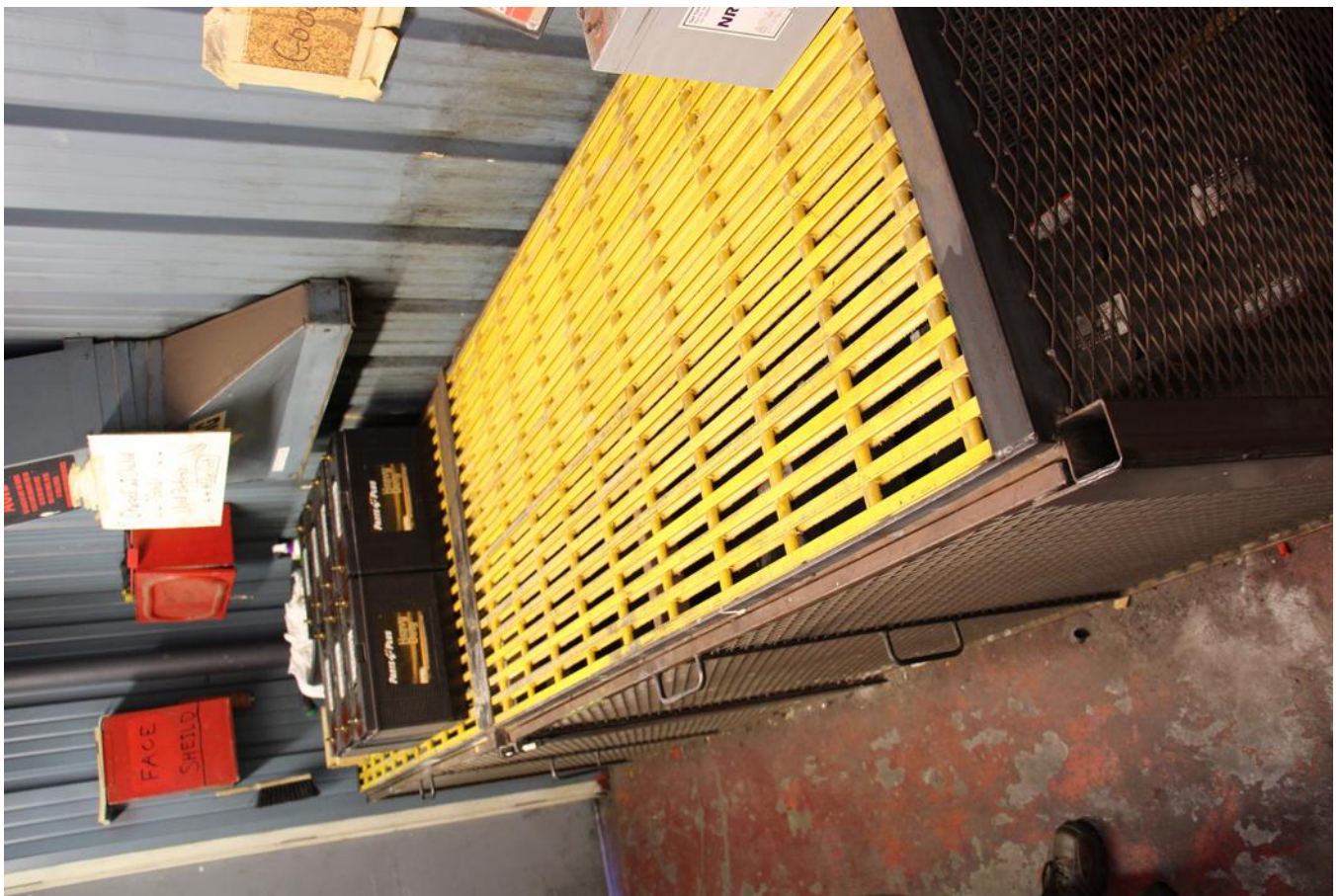


18661





20131



20301





20851



20852





20853



20854





20856



21001





21101



21251





21401



21402





21501



21502





21503



21504





21505



21801





22051



22151





22152



22301





22441



23501





23502



23551





23701



23801





24401



24402





24621



24801





24802



25321





25322



25333





26251



26252





26401



26402





26403



26404



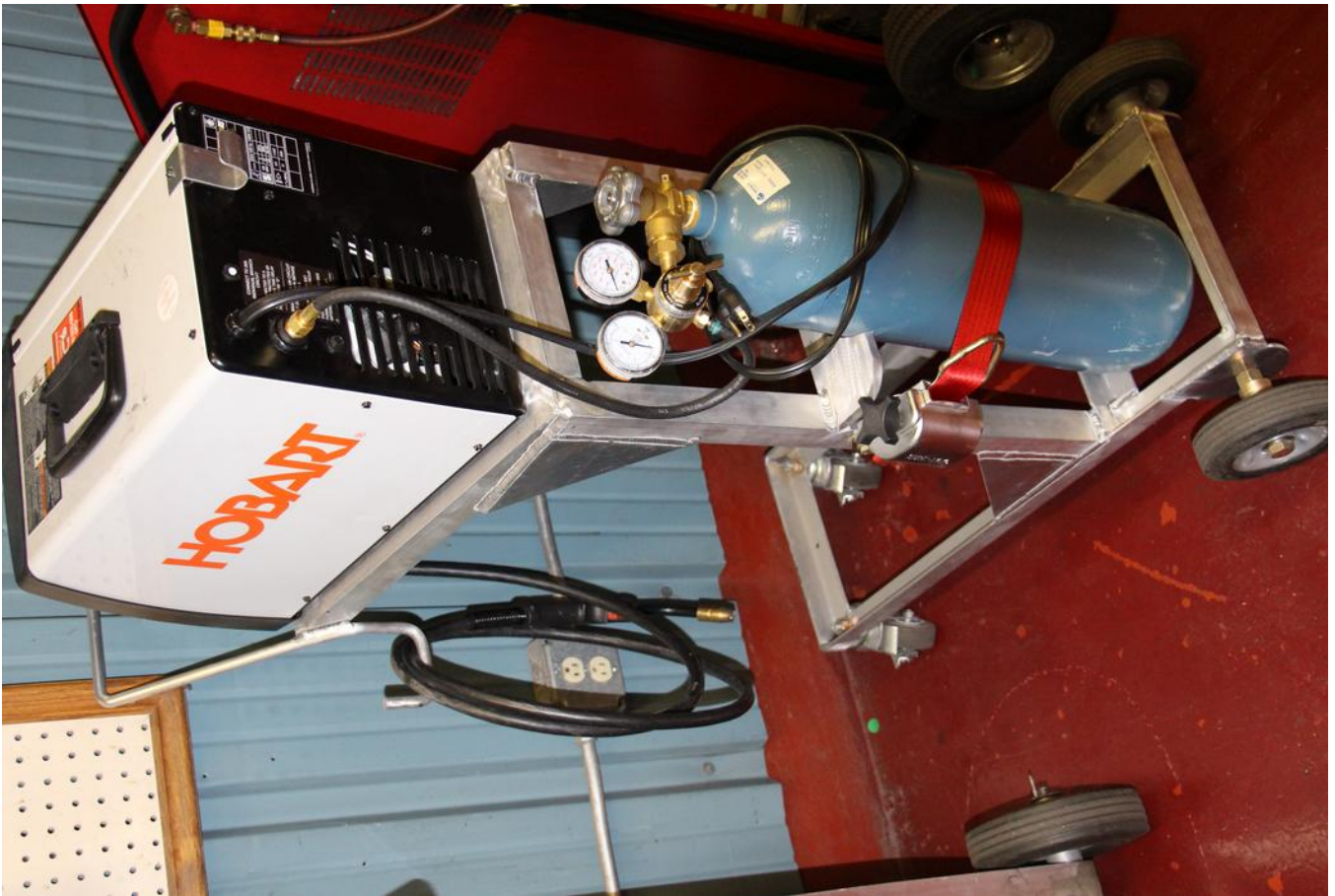


26961



26962





29001



29002





29003



29004



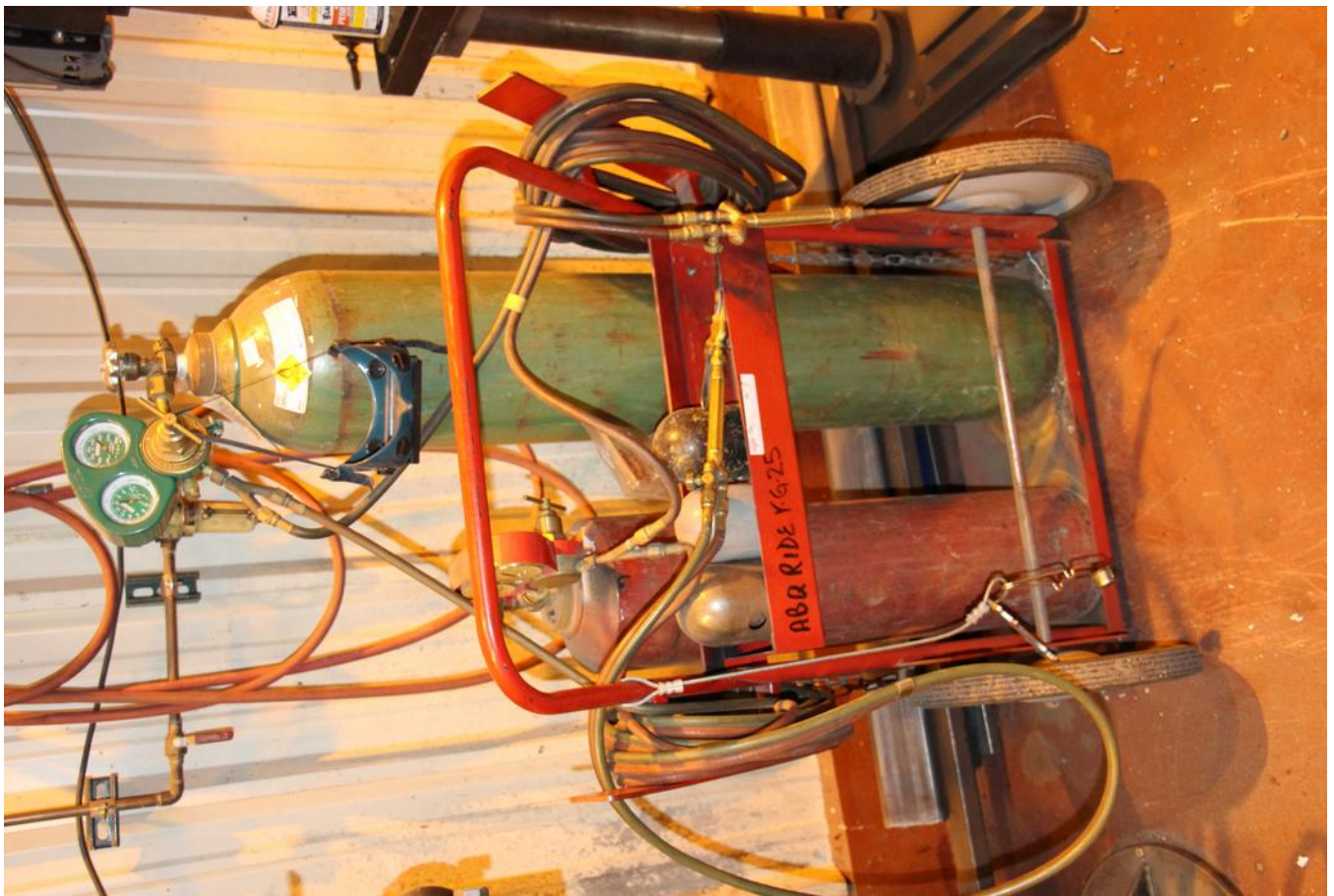


29005



29201





29202



30801





35601



35602





35603



35604





37151



37201





37831



37851



39011



39201





41801



46701





46702



49101





49121



50201





50301



50302





50303



50304





50305



50307





50308



50309





50351



50352





50353



50354





50355



50411





50421

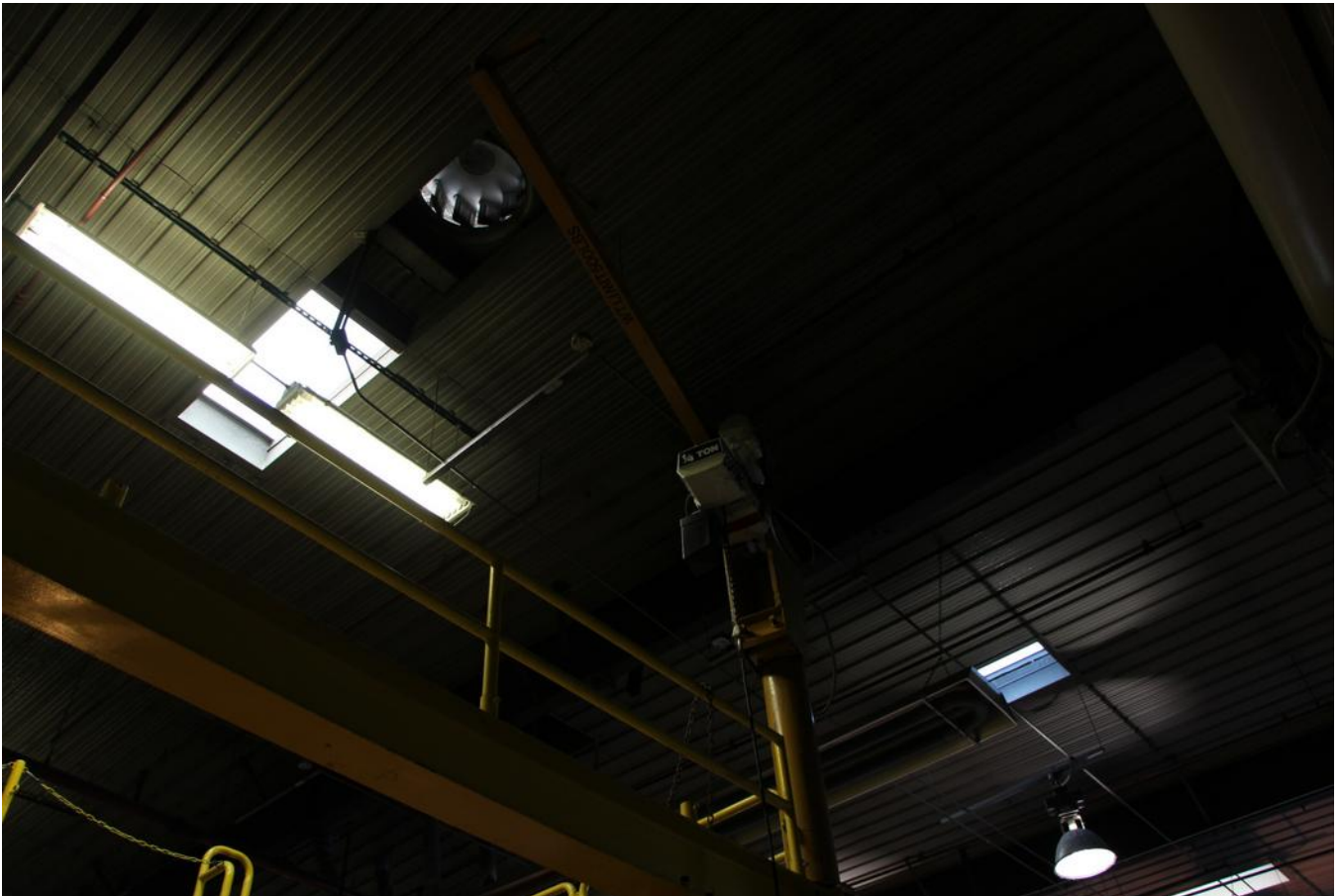


50791





51301



51302





52801

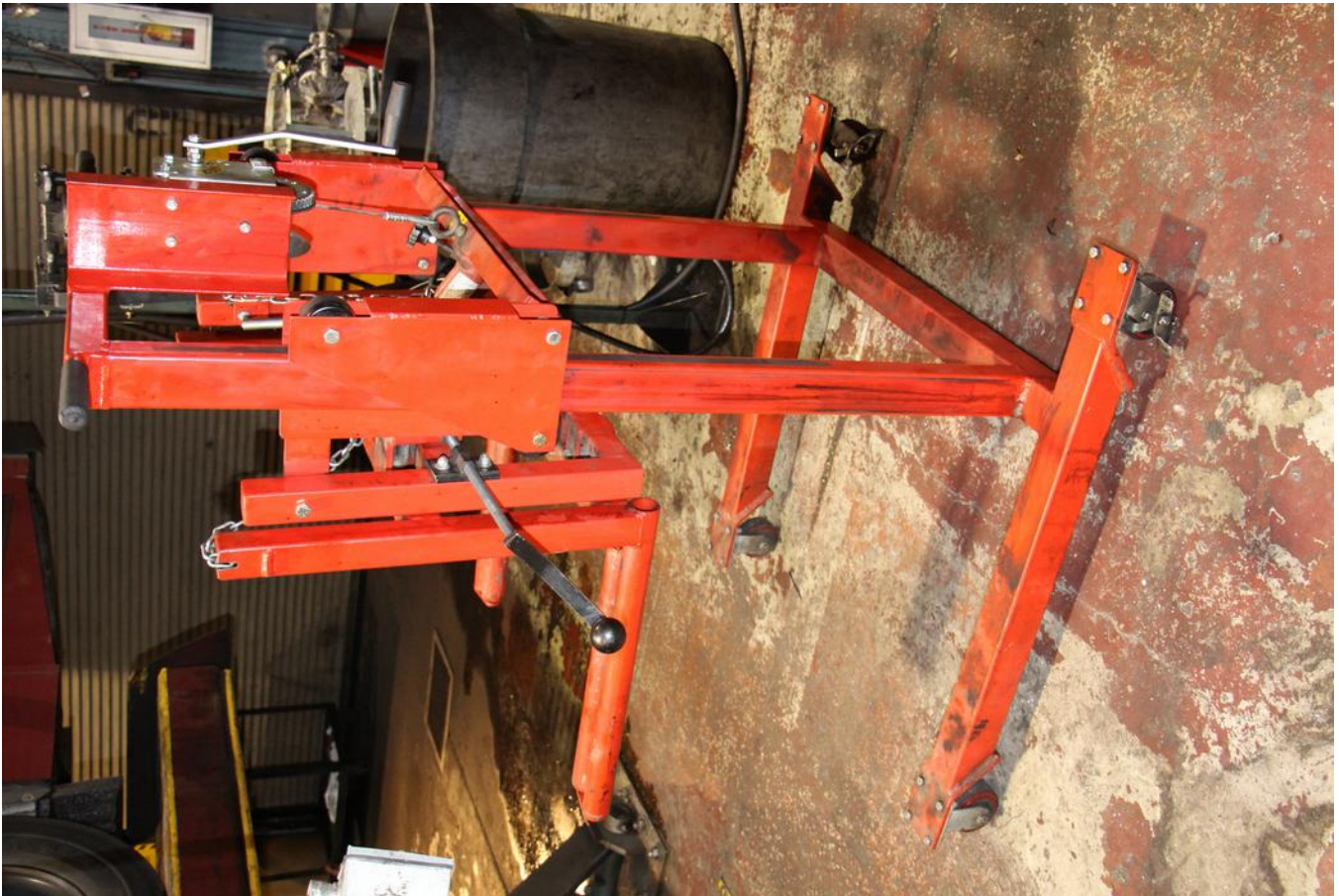


53102





53103



53121





53122



53123





53151



55001



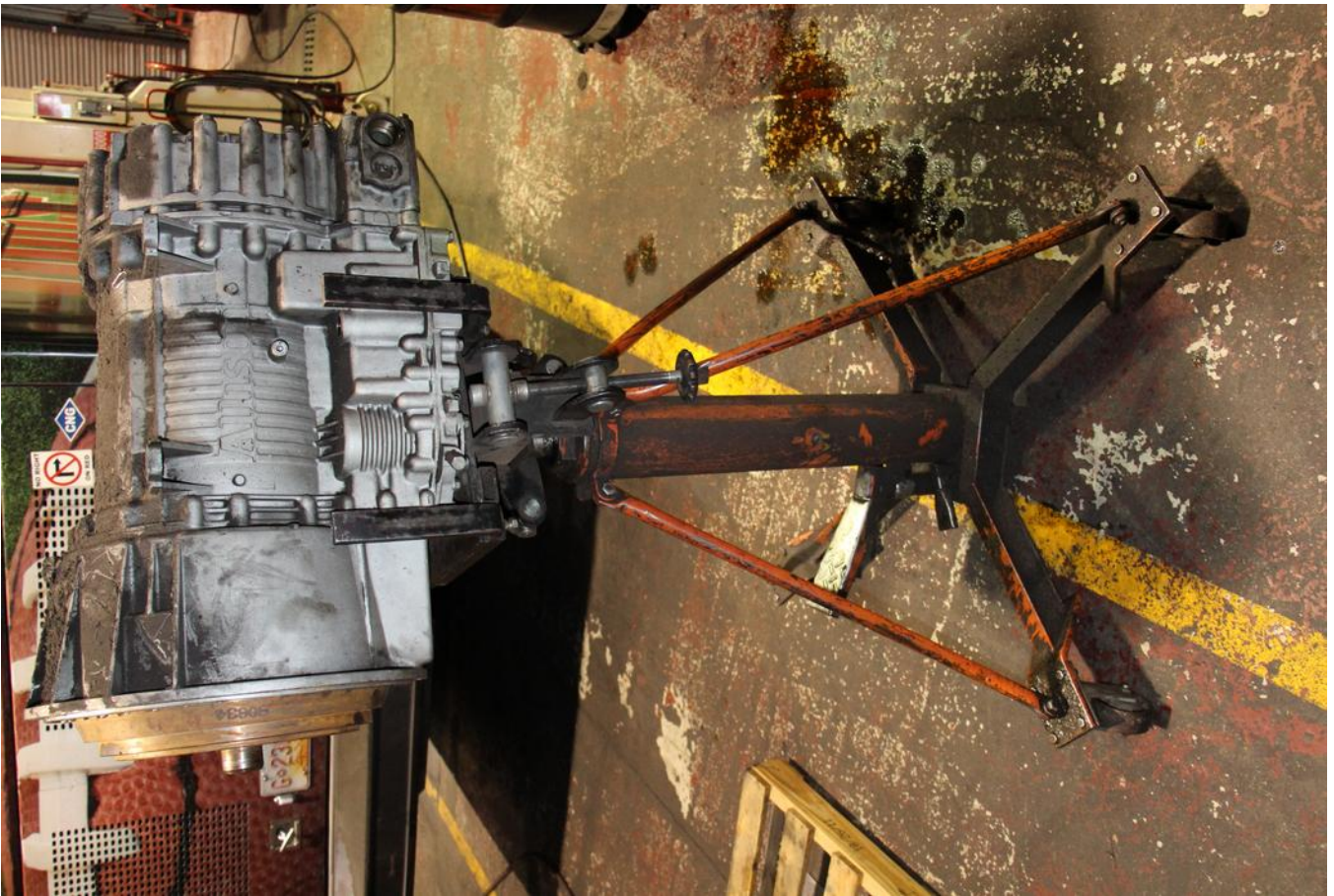


55002



55003





55401



56941





56942



56943





57031



57032





57034



57035





57802



58951





58952



61081





62421



62551





62552



66701





66701x



85251





85341



85751





87201x



87601





87701



87702





98001



98201





99911



99991



99992









# EQUIPMENT LIST

## INTRODUCTION

This Equipment List is organized as a working document to be updated as the design of the facility progresses. The purpose of this document is to identify types and quantities of new equipment items necessary for facility operation. Equipment denoted in this list is representative of the needs of each functional area of the facility as they were discussed with ABQ Ride staff members. Equipment is listed by function area with the following information:

**Mark.** All identical equipment items are assigned the same number. The Equipment Mark Number coordinates this list with equipment layout drawings and specifications. A five digit numeric Mark Number indicates an existing item to be moved from the existing facility.

**Description.** Description of equipment item.

**Price.** Estimated unit price not including installation. Letters under "price" indicate the location of the item in the existing facility at the time of the inventory.

**Qty.** Quantity of equipment item.

**Ext.** Extended Price. Equals Price times Quantity.

**Area.** Overall width and depth, respectively, in inches unless otherwise noted.

**Remarks.** Includes requirements to be considered during detailed design.

## **EQUIPMENT LIST**

**THIS PAGE LEFT INTENTIONALLY BLANK.**



**PRELIMINARY EQUIPMENT LIST**  
**ABQ RIDE YALE MAINTENANCE FACILITY**

April 2015

Mark	Description	Price	Qty	Ext	Area	Remarks
------	-------------	-------	-----	-----	------	---------

**MAINTENANCE BAYS & SHOPS**

**FIXED ROUTE GENERAL REPAIR BAYS (4 BAYS)**

3304	Reel, vehicle exhaust, motor operated, w/ 6" hose	8200	4	32800	60x30	
5670	Lift, axle, adj., 3 post, modular, 90,000 lb	240050	3	720150		
6235	Personal fall protection unit	1600	4	6400		
8190	Drops, air/electric, trapeze	1600	4	6400	24x6	
8710	Reel bank (WWF)	1600	2	3200		
8720	Reel bank (CG, GO)	2780	2	5560		
8740	Reel bank (ATF, CA, EC, EO)	5360	2	10720		
11301	Cabinet, computer	Bay 2	1	xxxx		
11301	Cabinet, computer	Bay 2	1	xxxx		
11302	Cabinet, computer	Align Bay 8	1	xxxx		
11303	Cabinet, computer	Catwalk Bay 9	1	xxxx		
11305	Cabinet, computer	Bay 5	1	xxxx		
18601	Workbench, steel top, 5" vise	Bay 1	1	xxxx		
18601	Workbench, steel top, 5" vise	Bay 2	1	xxxx		
18602	Workbench, steel top, 5" vise	Bay 4	1	xxxx		
18603	Workbench, steel top, 5" vise	Bay 5	1	xxxx		
18606	Workbench, steel top, 5" vise	Bay 7	1	xxxx		
20852	Buffer / grinder, 6", pedestal mounted	Bay 3	1	xxxx		
20854	Buffer / grinder, 6"	Bay 7	1	xxxx		
35601	Tank, parts cleaning	Bay 2	1	xxxx		
35601	Tank, parts cleaning	Bay 2	1	xxxx		
35602	Tank, parts cleaning	Bay 4	1	xxxx		
35604	Tank, parts cleaning	Bay 7	1	xxxx		
41801	Analyzer, engine, portable	Catwalk Bay 9	1	xxxx		

---

**Subtotal** **785230**

**PRELIMINARY EQUIPMENT LIST**  
**ABQ RIDE YALE MAINTENANCE FACILITY**

April 2015

Mark	Description	Price	Qty	Ext	Area	Remarks
------	-------------	-------	-----	-----	------	---------

**NRV / PARATRANSIT GENERAL REPAIR BAYS (6 BAYS)**

1860	Workbench, severe use	2700	6	16200	72x32	
2832	Vise, combination, swivel base, 5"	1240	6	7440	8x14	
3304	Reel, vehicle exhaust, motor operated, w/ 6" hose	8200	6	49200	60x30	
3560	Tank, parts cleaning, solvent, medium	3500	3	10500	42x30	
5700	Lift, drive-on, parallelogram, 30,000 lb, 26 ft	125630	3	376890	34'x9'	
6235	Personal fall protection unit	1600	6	9600		
8190	Drops, air/electric, trapeze	1600	6	9600	24x6	
8710	Reel bank (WWF)	1600	3	4800		
8720	Reel bank (CG, GO)	2780	3	8340		
8740	Reel bank (ATF, CA, EC, EO)	5360	3	16080		

---

**Subtotal** **508650**

**ALIGNMENT BAY (1 BAY)**

1860	Workbench, severe use	2700	1	2700	72x32	
2013	Alignment system, pit type, computer	53870	1	53870	13'x15'	
2832	Vise, combination, swivel base, 5"	1240	1	1240	8x14	
8190	Drops, air/electric, trapeze	1600	1	1600	24x6	

---

**Subtotal** **59410**



**PRELIMINARY EQUIPMENT LIST**  
**ABQ RIDE YALE MAINTENANCE FACILITY**

April 2015

Mark	Description	Price	Qty	Ext	Area	Remarks
<b>TIRE BAY (1 BAY)</b>						
1860	Workbench, severe use	2700	1	2700	72x32	
2832	Vise, combination, swivel base, 5"	1240	1	1240	8x14	
3304	Reel, vehicle exhaust, motor operated, w/ 6" hose	8200	1	8200	60x30	
3560	Tank, parts cleaning, solvent, medium	3500	1	3500	42x30	
5670	Lift, axle, adj., 3 post, modular, 90,000 lb	240050	1	240050		
6235	Personal fall protection unit	1600	1	1600		
8190	Drops, air/electric, trapeze	1600	1	1600	24x6	
8710	Reel bank (WWF)	1600	1	1600		
8720	Reel bank (CG, GO)	2780	1	2780		
8740	Reel bank (ATF, CA, EC, EO)	5360	1	5360		
				<hr/>		
<b>Subtotal</b>				<b>268630</b>		

**PRELIMINARY EQUIPMENT LIST  
ABQ RIDE YALE MAINTENANCE FACILITY**

April 2015

Mark	Description	Price	Qty	Ext	Area	Remarks
<b>TIRE SHOP</b>						
1140	Cabinet, flammable materials, large	1600	1	1600	43x18	
1190	Cabinet, storage, shop, 24"	930	1	930	36x24	
1860	Workbench, severe use	2700	1	2700	72x32	
2110	Cage, inflation, tire	800	1	800	22x36	
2450	Mounter/demounter, tire, truck	18000	1	18000	85x51	
2760	Spreader, tire	2110	1	2110	17x53	
2832	Vise, combination, swivel base, 5"	1240	1	1240	8x14	
16351	Rack, tire, 2 tier (exterior)	Tire Bay ext	2	xxxx		
21101	Cage, inflation	Tire Bay 6	1	xxxx		
24401	Mounter / demounter, truck	Tire Bay 6	1	xxxx		
24402	Mounter / demounter	Tire Bay 6	1	xxxx		
49101	Wheel balancer, automotive	Tire Bay 6	1	xxxx		
49121	Wheel balancer, heavy duty	Tire Bay 6	1	xxxx		
55002	Jack, floor, 3 ton	Tire Bay 6	2	xxxx		
				<b>Subtotal</b>	<b>27380</b>	
<b>TIRE STORAGE</b>						
1190	Cabinet, storage, shop, 24"	930	1	930	36x24	
1640	Rack, tire, stackable	470	20	9400	60x26	
				<b>Subtotal</b>	<b>10330</b>	



**PRELIMINARY EQUIPMENT LIST**  
**ABQ RIDE YALE MAINTENANCE FACILITY**

April 2015

Mark	Description	Price	Qty	Ext	Area	Remarks
<b>COMMON WORK AREA</b>						
1080	Bin unit, hose/line	2670	1	2670	36x36	
1140	Cabinet, flammable materials, large	1600	1	1600	43x18	
1190	Cabinet, storage, shop, 24"	930	2	1860	36x24	
1420	Rack, arm, single face, 7' high	1720	1	1720	36x22	
1580	Rack, pick, 48 drawer	1040	1	1040	36x12	
1860	Workbench, severe use	2700	3	8100	72x32	
2710	Saw, cut-off, hydraulic hose, 2" dia. cap.	4000	1	4000	22x24	
2832	Vise, combination, swivel base, 5"	1240	3	3720	8x14	
3080	Cabinet, abrasive blast, medium, w/ dust collector	11100	1	11100	56x88, 30x38	
6330	Crimper, hydraulic hose, bench mounted	5850	1	5850	8x22	
9820	Shower, drench, w/ eyewash	2640	1	2640	14x34	
18604	Workbench, steel top, 6" vise	Unit Shop	3	xxxx		
18605	Workbench, steel top, 2 pedestals	Unit Shop	2	xxxx		
18661	Workbench, steel top, portable	Unit Shop	1	xxxx		
20853	Buffer / grinder, 6"	Unit Shop	1	xxxx		
22151	Drill press, 20", floor mounted	Unit Shop	1	xxxx		
23701	Lathe	Unit Shop	1	xxxx		
24621	Oven	Unit Shop	1	xxxx		
25321	Press, hydraulic, 25 ton	Unit Shop	1	xxxx		
25322	Press, hydraulic, 60 ton, with arbor press	Unit Shop	1	xxxx		
26252	Vacuum, shop	Unit Shop	1	xxxx		
29201	Welder, oxyacetylene	Unit Shop	2	xxxx		
30801	Cabinet, abrasive blast	Unit Shop	1	xxxx		
35603	Tank, parts cleaning	Unit Shop	1	xxxx		
37831	Cabinet, jet spray	Unit Shop	1	xxxx		
37851	Cabinet, jet spray, small	Unit Shop	1	xxxx		
50201	Cart, oxyacetylene bottle, 2 wheel	Unit Shop	1	xxxx		
50353	Cart, 3 tier, fabricated	Unit Shop	1	xxxx		
50421	Cart, transmission	Unit Shop	1	xxxx		
52801	Crane, portable, 2 ton	Unit Shop	1	xxxx		
57801	Stand, transmission, fixed	Unit Shop	1	xxxx		
57802	Stand, engine, portable	Unit Shop	1	xxxx		
<b>Subtotal</b>				<b>44300</b>		

**PRELIMINARY EQUIPMENT LIST**  
**ABQ RIDE YALE MAINTENANCE FACILITY**

April 2015

Mark	Description	Price	Qty	Ext	Area	Remarks
------	-------------	-------	-----	-----	------	---------

**BRAKE SHOP**

1580	Rack, pick, 48 drawer	1040	1	1040	36x12	
1640	Rack, tire, stackable	470	1	470	60x26	
1860	Workbench, severe use	2700	1	2700	72x32	
2085	Buffer/grinder, 8", w/ pedestal	4780	1	4780	22x11	
2205	Drill press, variable speed, 15"	2600	1	2600	14x20	
2540	Press, manual/hydraulic, 25 ton	6280	1	6280	40.5x30x76	
2564	Press, arbor, ratchet, 5 ton, ped. mtd.	4440	1	4440	18x29	
2832	Vise, combination, swivel base, 5"	1240	1	1240	8x14	
3560	Tank, parts cleaning, solvent, medium	3500	1	3500	42x30	
9820	Shower, drench, w/ eyewash	2640	1	2640	14x34	
22441	Dust collector	Unit Shop	1	xxxx		
23501	Lathe, brake	Unit Shop	1	xxxx		
23501	Lathe, brake	Unit Shop	1	xxxx		

---

**Subtotal** **29690**

**ELECTRONICS / FAREBOX REPAIR SHOP**

1190	Cabinet, storage, shop, 24"	930	2	1860	36x24	
1456	Rack, bulk storage, w/ deck	1400	1	1400	72x24	
1680	Shelving unit, 18"	650	1	650	36x18	
1860	Workbench, severe use	2700	1	2700	72x32	
2832	Vise, combination, swivel base, 5"	1240	1	1240	8x14	

---

**Subtotal** **7850**





**PRELIMINARY EQUIPMENT LIST**  
**ABQ RIDE YALE MAINTENANCE FACILITY**

April 2015

Mark	Description	Price	Qty	Ext	Area	Remarks
------	-------------	-------	-----	-----	------	---------

**PAINT BOOTH (1 BAY)**

5555	Lift, man, pneumatic, paint booth	32330	2	64660	48x36	
6111	Booth, paint, vehicle, down-draft, artic	190000	1	190000	21'x81'	

<b>Subtotal</b>	<b>254660</b>
-----------------	---------------

**WELDING / BODY SHOP**

1140	Cabinet, flammable materials, large	1600	1	1600	43x18	
1190	Cabinet, storage, shop, 24"	930	1	930	36x24	
1793	Table, welding, heavy duty	9870	1	9870	60x60	
1860	Workbench, severe use	2700	1	2700	72x32	
2020	Anvil, w/ stand	3610	1	3610	27x11	
2460	Oven, dry rod	1820	1	1820	23x30	
2730	Screen, welding	300	1	300	144x1	
2832	Vise, combination, swivel base, 5"	1240	1	1240	8x14	
2900	Welder, MIG, portable, w/ wire feed	4800	1	4800	19x39	
2920	Welder, oxyacetylene, portable, w/ cart	1740	1	1740	25x13	
2925	Welder, plasma cutter, portable	3800	1	3800	13x21	
3200	Extractor, fume, w/ extension arm	7050	1	7050		
5074	Crane, bridge, suspended, 1 ton	28100	1	28100		
17951	Table, steel top, welding, with 5" vise	Welding Shop	1	xxxx		
17952	Table cutting, portable	Welding Shop	1	xxxx		



**PRELIMINARY EQUIPMENT LIST**  
**ABQ RIDE YALE MAINTENANCE FACILITY**

April 2015

Mark	Description	Price	Qty	Ext	Area	Remarks
21001	Buffer / grinder, 10"		1	xxxx		
22152	Drill press, 20", floor mounted		1	xxxx		
26961	Saw band, horizontal		1	xxxx		
26962	Saw, chop, cart mounted		1	xxxx		
28301	Vise, 4", pedestal mounted		1	xxxx		
29002	Welder, arc, portable		1	xxxx		
29003	Welder, MIG		1	xxxx		
29004	Welder		1	xxxx		
29005	Welder, arc, portable		1	xxxx		
29202	Welder, oxyactlene		1	xxxx		
50355	Cart, energpac		1	xxxx		
62551	Bending brake, 8'		1	xxxx		
62552	Finger brake		1	xxxx		

---

**Subtotal** **67560**

**BATTERY CHARGING ROOM**

2030	Bench, battery	3600	1	3600	104x24	
2140	Charger, battery, portable	1450	1	1450	18x30	
5015	Cart, battery lift	1180	1	1180	30x22	
9820	Shower, drench, w/ eyewash	2640	1	2640	14x34	
46701	Tester, battery		1	xxxx		
46702	Tester, battery load		1	xxxx		

---

**Subtotal** **8870**

**PRELIMINARY EQUIPMENT LIST**  
**ABQ RIDE YALE MAINTENANCE FACILITY**

April 2015

Mark	Description	Price	Qty	Ext	Area	Remarks
<b>LUBE / COMPRESSOR ROOM</b>						
2168	Compressor, air, rec. mtd., 25 HP dplx	38500	1	38500	89x61	
2232	Dryer, air, refrigerated, 200 CFM	6410	1	6410	28x30x58	
5290	Dolly, drum, caster base, 600 pound	240	1	240	24D	
8525	Pump, air piston (ATF), 4.25", 10:1	4910	1	4910		
8534	Pump, air piston (CG), w/ hoist, 4.25", 50:1	7240	1	7240		
8566	Pump, air piston (EO), 4.25", 10:1	4910	1	4910		
8575	Pump, air piston (GO), 4.25", 10:1	4910	1	4910		
8589	Pump, diaphragm, mixing (EC)	1460	1	1460		
8942	Tank, storage, cube, 500 gallon	4210	3	12630	46x61	
9820	Shower, drench, w/ eyewash	2640	1	2640	14x34	
21503	Compressor, reciprocating, 25 hp	Comp	1	xxxx		
21504	Compressor, reciprocating, 30 hp	Comp	1	xxxx		
22301	Dryer, refrigerated air	Comp	1	xxxx		
24802	Packer, bearing	Lube	1	xxxx		
<b>Subtotal</b>				<b>83850</b>		

**PORTABLE EQUIPMENT STORAGE**

13001	Ladder, rolling, 10 step	Bay 3	1	xxxx		
13002	Ladder, rolling, 3 step	Ext	1	xxxx		
13003	Ladder, rolling, 3 step, safety	Ext	2	xxxx		
20851	Buffer / grinder, pedestal mounted	Bay 1	1	xxxx		
21401	Charger, battery, portable	Bay 2	1	xxxx		
21402	Charger, battery	Align Bay 8	1	xxxx		
24801	Packer, bearing, portable	Bay 3	1	xxxx		
26251	Vacuum, wet/dry	Parts Room	1	xxxx		
26402	Cart, refrigerant service	Parts Room	1	xxxx		
26403	Cart, refrigerant reclaim	Parts Room	1	xxxx		
26404	Cart, refrigerant service	Parts Room	2	xxxx		
29001	Welder, wire feed	Parts Room	1	xxxx		
50301	Cart, parts, fabricated	Bay 1	1	xxxx		
50302	Cart, parts	Bay 7	1	xxxx		



**PRELIMINARY EQUIPMENT LIST**  
**ABQ RIDE YALE MAINTENANCE FACILITY**

April 2015

Mark	Description	Price	Qty	Ext	Area	Remarks
50305	Cart, parts	Welding Shop	1	xxxx		
50306	Cart, parts	Bay 2	2	xxxx		
50307	Cart, parts	Bay 3	1	xxxx		
50308	Cart, parts	Bay 5	1	xxxx		
50351	Cart, a frame, brake lathe	Weld Bay 12	1	xxxx		
50354	Cart, glass, portable	Weld Bay 12	2	xxxx		
50411	Cart, tool	Bay 5	1	xxxx		
51301	Dolly, dual wheel	Bay 2	1	xxxx		
53103	Dolly, dual wheel	Weld Bay 12	1	xxxx		
53121	Dolly, dual wheel, high rise	Bay 3	1	xxxx		
53122	Dolly, dual wheel, high lift	Bay 7	2	xxxx		
53123	Dolly, dual wheel, high lift	Weld Bay 12	1	xxxx		
55401	Jack, transmission	Bay 2	1	xxxx		
56941	Lift, portable	Bay 1	4	xxxx		
56942	Lift, portable	Bay 2	4	xxxx		
58951	Stand, safety	Bay 2	1	xxxx		

**Subtotal**

<b>TOTAL MAINTENANCE BAYS AND SHOPS</b>	<b>\$2,171,190.00</b>
---	-----------------------

**PRELIMINARY EQUIPMENT LIST  
ABQ RIDE YALE MAINTENANCE FACILITY**

April 2015

Mark	Description	Price	Qty	Ext	Area	Remarks
------	-------------	-------	-----	-----	------	---------

**MATERIALS MANAGEMENT**

**PARTS STOREROOM**

1040	Bin unit, 66 opening	1120	2	2240	36x12	
1113	Cabinet, 9 drawer, 59"	2400	16	38400	30x28	
1190	Cabinet, storage, shop, 24"	930	2	1860	36x24	
1456	Rack, bulk storage, w/ deck	1400	6	8400	72x24	
1530	Rack, pallet, 42" deep, 10' high, 6000lb, w/ deck	1760	10	17600	114x42	
1680	Shelving unit, 18"	650	20	13000	36x18	
5350	Forklift, electric, sit-down, 4000 lb	33550	1	33550	42x120 21x22x27 (charger) 28x71	
5520	Jack, pallet, electric	4150	1	4150		
50309	Cart, parts	Parts Room	1	xxxx		
50352	Cart, a-frame	Parts Room	2	xxxx		
53102	Dolly, drum, 2 wheel	Parts Room	1	xxxx		
55001	Jack, floor	Parts Room	1	xxxx		
98001	Scale, portable	Parts Room	1	xxxx		
				<b>Subtotal</b>	<b>119200</b>	

<b>TOTAL MATERIALS MANAGEMENT</b>	<b>\$119,200.00</b>
-----------------------------------	---------------------



**PRELIMINARY EQUIPMENT LIST**  
**ABQ RIDE YALE MAINTENANCE FACILITY**

April 2015

Mark	Description	Price	Qty	Ext	Area	Remarks
------	-------------	-------	-----	-----	------	---------

**FUEL**

**DIESEL / CNG FUEL POSITION (2 POSITIONS)**

3290	Hood, vehicle exhaust	2500	2	5000	48x72	
3480	Tank, mop, plumbed, w/ wringer	4000	2	8000	42x21	
5460	Hopper, self-dumping, 3/4 yard	1530	2	3060	61x40	
8075	Dispenser, fuel, dual hose	6220	2	12440	29x18	
8210	Fuel management system, transit	190000	1	190000	Cntr-24x8, RIH-16x8	
8245	Gantry, fuel, w/ hose & nozzle	30000	2	60000	23'x36	
8710	Reel bank (WWF)	1600	2	3200		
8740	Reel bank (ATF, CA, EC, EO)	5360	2	10720		
9820	Shower, drench, w/ eyewash	2640	1	2640	14x34	

---

**Subtotal** **295060**

**DIESEL / GASOLINE FUEL POSITION (1 POSITION)**

3290	Hood, vehicle exhaust	2500	1	2500	48x72	
3480	Tank, mop, plumbed, w/ wringer	4000	1	4000	42x21	
5460	Hopper, self-dumping, 3/4 yard	1530	1	1530	61x40	
8075	Dispenser, fuel, dual hose	6220	1	6220	29x18	
8245	Gantry, fuel, w/ hose & nozzle	30000	1	30000	23'x36	
8710	Reel bank (WWF)	1600	1	1600		
8740	Reel bank (ATF, CA, EC, EO)	5360	1	5360		
9820	Shower, drench, w/ eyewash	2640	1	2640	14x34	

---

**Subtotal** **53850**

**PRELIMINARY EQUIPMENT LIST  
ABQ RIDE YALE MAINTENANCE FACILITY**

April 2015

Mark	Description	Price	Qty	Ext	Area	Remarks
<b>CLEANING SUPPLY ROOM</b>						
1680	Shelving unit, 18"	650	4	2600	36x18	
				<b>Subtotal</b>	<b>2600</b>	
<b>MONEY COUNTING ROOM</b>						
7800	Vault/receiver, farebox, mobile bin	36500	3	109500	38x41	
7820	Data collection & reporting system, farebox	100000	1	100000		
				<b>Subtotal</b>	<b>209500</b>	
<b>LUBE / COMPRESSOR ROOM</b>						
2158	Compressor, air, rec. mtd., 10 HP dplx	18650	1	18650	88x29	
2232	Dryer, air, refrigerated, 200 CFM	6410	1	6410	28x30x58	
5290	Dolly, drum, caster base, 600 pound	240	1	240	24D	
8525	Pump, air piston (ATF), 4.25", 10:1	4910	1	4910		
8566	Pump, air piston (EO), 4.25", 10:1	4910	1	4910		
8589	Pump, diaphragm, mixing (EC)	1460	1	1460		
8942	Tank, storage, cube, 500 gallon	4210	3	12630	46x61	
9820	Shower, drench, w/ eyewash	2640	1	2640	14x34	
				<b>Subtotal</b>	<b>51850</b>	
				<b>TOTAL FUEL</b>		<b>\$612,860.00</b>



**PRELIMINARY EQUIPMENT LIST  
ABQ RIDE YALE MAINTENANCE FACILITY**

April 2015

Mark	Description	Price	Qty	Ext	Area	Remarks
------	-------------	-------	-----	-----	------	---------

**WASH**

**AUTOMATIC BUS WASHER / WATER RECLAIM / WASH EQUIPMENT ROOM**

3901	Washer, vehicle, drive-thru, 4 brush	240000	1	240000	70'x18'	
------	--------------------------------------	--------	---	--------	---------	--

<b>Subtotal</b>	<b>240000</b>
-----------------	---------------

**CHASSIS WASH**

3720	Washer, pressure, hot water, NG	13410	1	13410	51x31	
------	---------------------------------	-------	---	-------	-------	--

3720A	Hose Reel for 3720	1290	1	1290		
-------	--------------------	------	---	------	--	--

5707	Lift, drive-on, parallelogram, 75,000 lb, 48 ft	216600	1	216600	56'x9'	
------	---	--------	---	--------	--------	--

9820	Shower, drench, w/ eyewash	2640	1	2640	14x34	
------	----------------------------	------	---	------	-------	--

13004	Ladder, rolling, 15 step	Steam	1	xxxx		
-------	--------------------------	-------	---	------	--	--

37151	Washer, high pressure, portable	Steam	1	xxxx		
-------	---------------------------------	-------	---	------	--	--

37201	Washer, high pressure, hot water, with reel	Steam	1	xxxx		
-------	---	-------	---	------	--	--

<b>Subtotal</b>	<b>233940</b>
-----------------	---------------

**DETAIL CLEAN**

3705	Washer/extractor, towel	6550	1	6550	60x30	
------	-------------------------	------	---	------	-------	--

3480	Tank, mop, plumbed, w/ wringer	4000	1	4000	42x21	
------	--------------------------------	------	---	------	-------	--

5460	Hopper, self-dumping, 3/4 yard	1530	1	1530	61x40	
------	--------------------------------	------	---	------	-------	--

9820	Shower, drench, w/ eyewash	2640	1	2640	14x34	
------	----------------------------	------	---	------	-------	--

<b>Subtotal</b>	<b>14720</b>
-----------------	--------------

<b>TOTAL WASH</b>	<b>\$488,660.00</b>
-------------------	---------------------

**PRELIMINARY EQUIPMENT LIST  
ABQ RIDE YALE MAINTENANCE FACILITY**

April 2015

Mark	Description	Price	Qty	Ext	Area	Remarks
------	-------------	-------	-----	-----	------	---------

**FACILITY MAINTENANCE**

**FACILITY MAINTENANCE AND BUS STOP SHOP**

1793	Table, welding, heavy duty	9870	1	9870	60x60	
1860	Workbench, severe use	2700	4	10800	72x32	
2085	Buffer/grinder, 8", w/ pedestal	4780	1	4780	22x11	
2205	Drill press, variable speed, 15"	2600	1	2600	14x20	
2460	Oven, dry rod	1820	1	1820	23x30	
2730	Screen, welding	300	1	300	144x1	
2832	Vise, combination, swivel base, 5"	1240	1	1240	8x14	
2900	Welder, MIG, portable, w/ wire feed	4800	1	4800	19x39	
2920	Welder, oxyacetylene, portable, w/ cart	1740	1	1740	25x13	
2925	Welder, plasma cutter, portable	3800	1	3800	13x21	
3200	Extractor, fume, w/ extension arm	7050	1	7050		
5078	Crane, bridge, suspended, 2 ton	33860	1	33860		

---

**Subtotal 82660**

**TOOL CRIB**

1190	Cabinet, storage, shop, 24"	930	2	1860	36x24	
1680	Shelving unit, 18"	650	4	2600	36x18	
26401	Cart, AC service	Tool / Tire	1	xxxx		

---

**Subtotal 4460**

<b>TOTAL FACILITY MAINTENANCE</b>	<b>\$87,120.00</b>
-----------------------------------	--------------------

<b>YALE SITE EQUIPMENT TOTAL</b>	<b>\$3,479,030</b>
----------------------------------	--------------------



**PRELIMINARY EQUIPMENT LIST**  
**ABQ RIDE YALE MAINTENANCE FACILITY**

April 2015

Mark	Description	Price	Qty	Ext	Area	Remarks
<b><u>SURPLUS</u></b>						
10601	Bin, nut / bolt	Catwalk Bay 9	1			
11131	Cabinet, 12 drawer	Parts Room	6	xxxx	59"	
11132	Cabinet, 10 drawer	Parts Room	5	xxxx		
11133	Cabinet, 5 drawer	Parts Room	3	xxxx		
11134	Cabinet, 6 drawer	Parts Room	2	xxxx		
11135	Cabinet, 12 drawer	Parts Mezz	1	xxxx		
11136	Cabinet, 9 drawer	Unit Shop	1	xxxx	59"	
11137	Cabinet, 12 drawer	Unit Shop	1	xxxx	59"	
11138	Cabinet, 5 drawer	Body Bay 10	1	xxxx		
11139	Cabinet, drawer	Body Bay 10	2	xxxx		
11304	Cabinet, computer	Body Bay 10	2	xxxx		
11401	Cabinet, flammable material, wall mounted	Bay 1	1	xxxx		
11401	Cabinet, flammable material	Parts Room	2	xxxx		
11402	Cabinet, flammable material, 45 gallon	Parts Room	2	xxxx		
11901	Cabinet, storage, 2 door	Parts Room	3	xxxx		
11902	Cabinet, shop storage	Tire Bay 6	1	xxxx		
11903	Cabinet, shop storage	Body Bay 10	5	xxxx		
11904	Cabinet, shop storage, short	Body Bay 10	2	xxxx		
11905	Cabinet, storage, short	Paint Prep 11B	1	xxxx		
11906	Cabinet, shop storage	Tool / Tire	1	xxxx		
12201	Desk, shop, standup	Body Bay 10	1	xxxx		
14321	Rack, belt, wall mounted	Parts Room	1	xxxx		
14561	Rack, bulk	Bay 1	1	xxxx		
14562	Rack, bulk	Parts Room	4	xxxx	6'x3'	
14563	Rack, bulk, fabricated	Parts Room	1	xxxx	8'	
14564	Rack, bulk	Parts Mezz	39	xxxx	6'x3'	
14571	Rack, expanded metal, 5 shelf	Unit Shop	1	xxxx	6'x2'	
15041	Rack, glass, portable	Parts Mezz	1	xxxx		
15042	Rack, glass, portable	Weld Bay 12	1	xxxx		
16111	Rack, wire hose	Unit Shop	1	xxxx		
16801	Shelving unit, 18"	Parts Room	1	xxxx		
16802	Shelving unit, 24"	Parts Room	1	xxxx		
16803	Shelving unit, 12"	Parts Room	1	xxxx		

**PRELIMINARY EQUIPMENT LIST**  
**ABQ RIDE YALE MAINTENANCE FACILITY**

April 2015

Mark	Description	Price	Qty	Ext	Area	Remarks
16804	Shelving unit, 18"	Parts Room	1	xxxx	4'x18"	
18607	Workbench, steel top	Align Bay 8	1	xxxx		
20131	Alignment system	Align Bay 8	1	xxxx		
20301	Battery bench, fiberglass grate, fabricated	Battery	2	xxxx		
21251	Battery charger with bus bar	Battery	1	xxxx		
21501	Compressor, air, reciprocating	Tire Bay 6	1	xxxx		
21502	Compressor, reciprocating, 5 hp	Weld Bay 12	1	xxxx		
21505	Compressor, reciprocating, vertical tank	Steam	1	xxxx		
23551	Lathe, brake, automotive	Weld Bay 12	1	xxxx		Down?
25333	Press, hydraulic, 100 ton, with arbor press (usable???)	Weld Bay 12	1	xxxx		Down?
39011	Washer, 4 brush, top mounted drag mop, with blower arch	Steam	1	xxxx		
39201	Water reclaim (inoperable)	Steam	1	xxxx		Broken and bypassed
50301	Cart, parts	Unit Shop	1	xxxx		
50304	Cart, parts	Weld Bay 12	2	xxxx		
50791	Monorail, 1/2 ton	Parts Mezz	1	xxxx		
51302	Crane, jib, 1/2 ton, electric chain hoist	Catwalk Bay 9	1	xxxx		
53151	Lift, tire (????)	Tire Bay 6	1	xxxx		
56943	Lift, portable, 16,000 pound	Weld Bay 12	3	xxxx		broken
57031	Lift, drive-on, parallelogram, 50,000 lb, surface mounted	Bay 3	1	xxxx		
57032	Lift, drive-on, parallelogram, 50,000 lb, surface mounted	Bay 4	1	xxxx		
57034	Lift, drive-on, parallelogram, 50,000 lb, flush mounted	Bay 5	1	xxxx		
57035	Lift, drive-on, parallelogram, 50,000 lb, surface mounted	Bay 7	1	xxxx		
58952	Stand, safety, tall	Weld Bay 12	3	xxxx		
61081	Paint booth, cross draft	Paint Booth 11A	1	xxxx		
62421	Catwalk	Catwalk Bay 9	1	xxxx		
85251	Pump, ATF, drum mounted	Lube	1	xxxx		
85341	Pump, CG, drum mounted	Lube	1	xxxx		
85751	Pump, GO, drum mounted	Lube	1	xxxx		
87011	Overhead reel (EO2)	Bay 7	1	xxxx		
87012	Overhead reel (EO3)	Bay 7	1	xxxx		
87201	Overhead reel, set of 2 (CG, GO)	Bay 2	1	xxxx		
87202	Overhead reel, set of 2 (CG, GO)	Bay 4	1	xxxx		



**PRELIMINARY EQUIPMENT LIST**  
**ABQ RIDE YALE MAINTENANCE FACILITY**

April 2015

Mark	Description	Price	Qty	Ext	Area	Remarks
87203	Overhead reel, set of 2 (CG, GO)	Bay 7	1	xxxx		
87601	Overhead reel, set of 2 (CG, GO)	Bay 1	1	xxxx		
87601	Overhead reel, set of 6 (ATF, CA, EO1, EO2, GO, H2O)	Bay 2	1	xxxx		
87602	Overhead reel, set of 6 (ATF, CA, EO1, EO2, GO, H2O)	Bay 5	1	xxxx		
87603	Overhead reel, set of 6 (ATF, CA, EO1, EO2, GO, H2O)	Bay 7	1	xxxx		
98201	Safety shower / eyewash	Battery	1	xxxx		
99910	Tool box	Body Bay 10	2	xxxx		
99911	Tool box, short	Body Bay 10	1	xxxx		
99912	Tool box	Tool / Tire	5	xxxx		
99991	Tool box	Bay 1	2	xxxx		
99992	Tool box	Bay 2	1	xxxx		
99993	Tool box	Bay 3	1	xxxx		
99994	Tool box	Bay 3	1	xxxx		
99995	Tool box	Bay 5	3	xxxx		
99996	Tool box, large	Bay 5	3	xxxx		
99997	Tool box	Unit Shop	2	xxxx		
99998	Tool box	Tire Bay 6	1	xxxx		
99999	Tool box, large	Body Bay 10	1	xxxx		